

www.beargrip.com



Beargrip is a professional and modern organization. We manufacture high quality ergonomic designed branded hand tools to our own Beargrip standard and quality as private label to customer requirements. Beargrip tools meet and exceed all international standards and are guaranteed against defective materials or workmanship.

Service, flexibility and fairness are important strengths for Beargrip. With the help of these strengths Beargrip tools are sold through a global network of distributors. To keep our network strong we are continuously working on ideas for new products and adaptations on existing products.

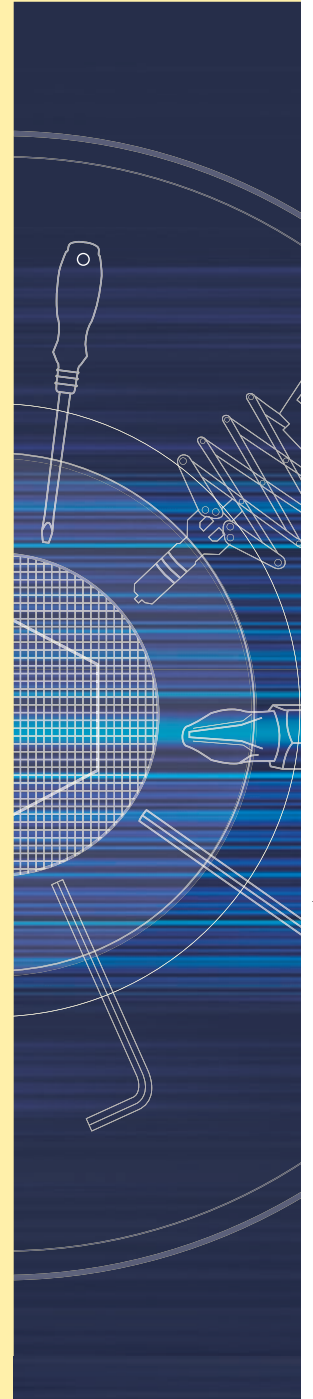
Beargrip is dedicated in the manufacture of the following hand tools:

- Hexagonal keys
- Ball ended hexagonal keys
- Torque keys
- Screwdrivers
- Bits
- Riveting pliers
- Rivets

We hope our catalogue will provide you with a good impression of the Beargrip product range and the specialized manufacturing capability of our company here in Holland and contribution we can give.

The Beargrip Team

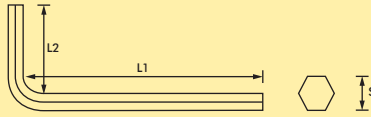




Beargrip Tool Mfg. Co.
P.O. Box 6
7963 ZG Ruinen
The Netherlands
T: +31 (0)522 47 17 44
F: +31 (0)522 47 25 17
E: mail@beargrip.nl
I: www.beargrip.com

MM = 2200 HEXAGONAL KEYS ISO 2936 (DIN 911), 54°-56° HRc

STIFTSLEUTELS, ZWARTE UITVOERING
 HEXAGONAL KEYS, BLACK FINISH
 SECHSKANTSTIFTSCHLÜSSEL, SCHWARZE AUSFÜHRUNG
 CLÉS SIX-PANS MÂLES, FINITION NOIRE
 LLAVES HEXAGONALES, PAVONADAS



2200 mm	S max mm	S min mm	L1 mm	L2 mm	single packed	plastic bags x keys in box	packed x per box	bulk loose per box
0.71	0.711	0.698	32	6	1	10 x 10	100	500
0.89	0.889	0.876	32	10	1	10 x 10	100	500
1	0.989	0.976	32	10	1	10 x 10	100	500
1.27	1.270	1.244	40	12	1	10 x 10	100	500
1½	1.500	1.475	45	14	1	10 x 10	100	500
2	2.000	1.960	50	16	1	10 x 10	100	500
2½	2.500	2.460	56	18	1	10 x 10	100	500
3	3.000	2.960	63	20	1	10 x 10	100	500
4	4.000	3.952	70	25	1	5 x 10	100	500
5	5.000	4.952	80	28	1	5 x 10	100	500
6	6.000	5.952	90	32	1	5 x 10	100	500
7	7.000	6.942	95	34	1	5 x 5	100	500
8	8.000	7.942	100	36	1	5 x 5	100	500
9	9.000	8.942	106	38	1	5 x 5	100	500
10	10.000	9.942	112	40	1	4 x 5	100	500
11	11.000	10.942	120	42	1	2 x 5	100	500
12	12.000	11.890	125	45	1	2 x 5	100	500
13	13.000	12.890	133	50	1	2 x 5		
14	14.000	13.890	140	56	1	2 x 5		
17	17.000	16.890	160	63		1 x 5		
19	19.000	18.870	180	70		1 x 5		
22	22.000	21.870	200	80		1		
24	24.000	23.870	224	90		1		
27	27.000	26.870	250	100		1		
32	32.000	31.840	315	125		1		

Available on request: 3½ - 4½ - 5½ - 15 - 16 - 18 - 20 - 36 - 41 - 42 - 50 - 55 - 60 - 65 mm.

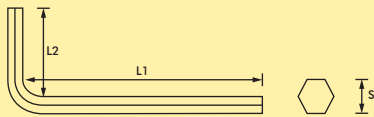


STIFTSLEUTELS
 HEXAGONAL KEYS
 SECHSKANTSTIFTSCHLÜSSEL
 CLÉS SIX-PANS MÂLES
 LLAVES HEXAGONALES

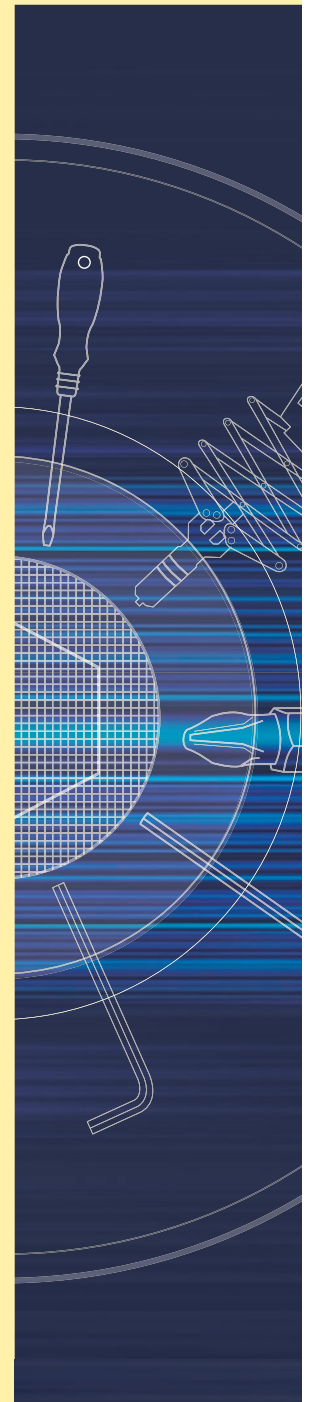


INCH = 1200 HEXAGONAL KEYS BS 2470, 54°-56° HRc

STIFTSLEUTELS, ZWARTE UITVOERING
 HEXAGONAL KEYS, BLACK FINISH
 SECHSKANTSTIFTSCHLÜSSEL, SCHWARZE AUSFÜHRUNG
 CLÉS SIX-PANS MÂLES, FINITION NOIRE
 LLAVES HEXAGONALES, PAVONADAS



1200 inch	S max inch	S min inch	L1 inch	L2 inch	single packed	plastic bags x keys in box	packed loose per box	bulk per box
0.028	0.0280	0.0275	1.313	0.313	1	10 x 10	100	500
0.035	0.3500	0.0345	1.313	0.438	1	10 x 10	100	500
0.050	0.0500	0.0490	1.750	0.625	1	10 x 10	100	500
1/16	0.0625	0.0615	1.772	0.551	1	10 x 10	100	500
5/64	0.0781	0.0771	1.969	0.630	1	10 x 10	100	500
3/32	0.0937	0.0927	2.205	0.709	1	10 x 10	100	500
7/64	0.1094	0.1079	2.244	0.748	1	10 x 10	100	500
1/8	0.1250	0.1235	2.480	0.787	1	10 x 10	100	500
9/64	0.1406	0.1391	2.441	0.866	1	10 x 10	100	500
5/32	0.1562	0.1547	2.756	0.984	1	5 x 10	100	500
3/16	0.1875	0.1860	3.150	1.102	1	5 x 10	100	500
7/32	0.2187	0.2172	3.543	1.260	1	5 x 10	100	500
1/4	0.2500	0.2485	3.543	1.299	1	5 x 5	100	500
9/32	0.2812	0.2797	3.740	1.093	1	5 x 5	100	500
5/16	0.3125	0.3110	3.937	1.417	1	5 x 5		
3/8	0.3750	0.3735	4.409	1.575	1	4 x 5		
7/16	0.4375	0.4355	4.844	1.594	1	2 x 5		
1/2	0.5000	0.4975	4.921	1.772	1	2 x 5		
9/16	0.5625	0.5600	5.844	1.844		2 x 5		
5/8	0.6250	0.6225	6.344	1.969		1 x 5		
3/4	0.7500	0.7470	7.344	2.219		1 x 5		
7/8	0.8750	0.8720	8.344	2.469		1		
1	1.0000	0.9970	9.344	2.719		1		



Beargrip Tool Mfg. Co.
 P.O. Box 6
 7963 ZG Ruinen
 The Netherlands
 T: +31 (0)522 47 17 44
 F: +31 (0)522 47 25 17
 E: mail@beargrip.nl
 I: www.beargrip.com

MM HEXAGONAL KEYS ISO 2936 (DIN 911), 54°-56° HRC
INCH HEXAGONAL KEYS BS 2470, 54°-56° HRC

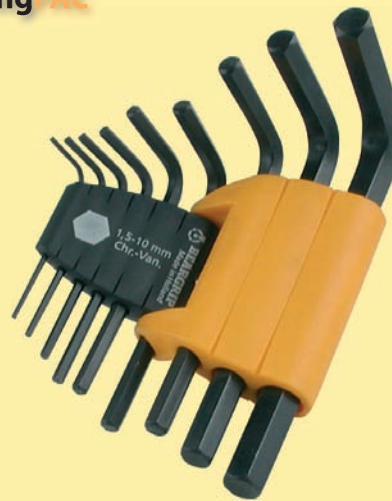
STIFTSLEUTELS, ZWARTE UITVOERING
 HEXAGONAL KEYS, BLACK FINISH
 SECHSKANTSTIFTSCHLÜSSEL, SCHWARZE AUSFÜHRUNG
 CLÉS SIX-PANS MÂLES, FINITION NOIRE
 LLAVES HEXAGONALES, PAVONADAS

SET IN BLISTER

12

MM = 2246	○	1½ - 2 - 2½ - 3 - 4 - 5 - 6 - 8 - 10	9 keys
-----------	---	--------------------------------------	--------

INCH = 1246	○	1/16 - 5/64 - 3/32 - 1/8 - 5/32 3/16 - 1/4 - 5/16 - 3/8	9 keys
-------------	---	------------------------------------------------------------	--------



SET IN BLISTER

12

EasyPAC, easy handling, easy storing, easy use.

MM = 2243	○	2 - 2½ - 3 - 4 - 5 - 6 - 8 - 10	8 keys
-----------	---	---------------------------------	--------



STIFTSLEUTELS
 HEXAGONAL KEYS
 SECHSKANTSTIFTSCHLÜSSEL
 CLÉS SIX-PANS MÂLES
 LLAVES HEXAGONALES



MM HEXAGONAL KEYS ISO 2936 (DIN 911), 54°-56° HRc
INCH HEXAGONAL KEYS BS 2470, 54°-56° HRc

STIFTSLEUTELS, ZWARTE UITVOERING
 HEXAGONAL KEYS, BLACK FINISH
 SECHSKANTSTIFTSCHLÜSSEL, SCHWARZE AUSFÜHRUNG
 CLÉS SIX-PANS MÂLES, FINITION NOIRE
 LLAVES HEXAGONALES, PAVONADAS

PLASTIC BOX

12

MM = 2216	⊙	2 · 2½ · 3 · 4 · 5 · 6 · 8 · 10	8 keys
-----------	---	---------------------------------	--------

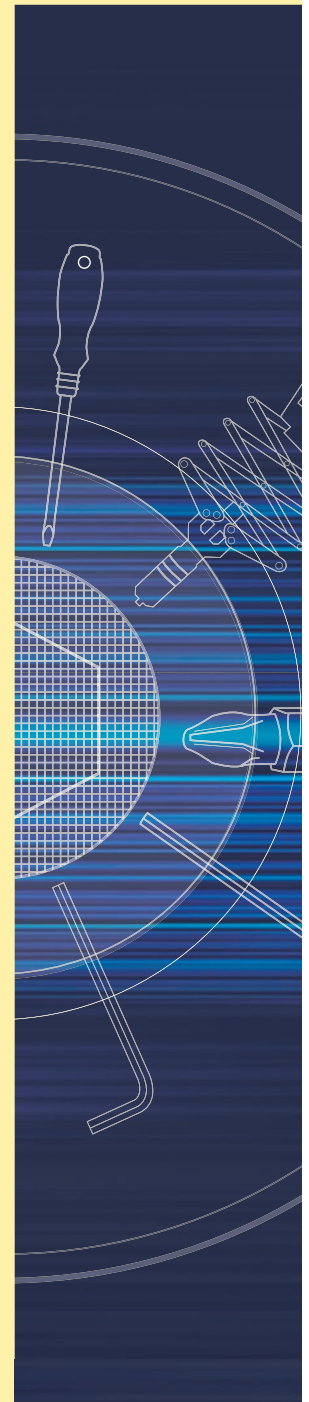


SET ON RING IN BLISTER

12

MM = 2211	⊙	1½ · 2 · 2½ · 3 · 4 · 5 · 6 · 7	8 keys
MM = 2213	⊙	1½ · 2 · 2½ · 3 · 4 · 5 · 6 · 8 · 10	9 keys
MM = 2220	⊙	1½ · 2 · 2½ · 3 · 4 · 5 · 6 · 8	8 keys
MM = 2221	⊙	2 · 2½ · 3 · 4 · 5 · 6	6 keys
MM = 2222	⊙	2 · 2½ · 3 · 4 · 5 · 6 · 8	7 keys
MM = 2223	⊙	2 · 2½ · 3 · 4 · 5 · 6 · 8 · 10	8 keys
MM = 2226	⊙	1½ · 2 · 2½ · 3 · 4 · 5 · 6	7 keys

INCH = 1213	⊙	1/16 · 5/64 · 3/32 · 1/8 · 5/32 3/16 · 7/32 · 1/4 · 5/16 · 3/8	10 keys
INCH = 1220	⊙	1/16 · 5/64 · 3/32 · 1/8 · 5/32 3/16 · 7/32 · 1/4	8 keys
INCH = 1222	⊙	5/64 · 3/32 · 1/8 · 5/32 · 3/16 7/32 · 1/4	7 keys
INCH = 1223	⊙	5/64 · 3/32 · 1/8 · 5/32 · 3/16 7/32 · 5/16 · 3/8	8 keys



Beargrip Tool Mfg. Co.
 P.O. Box 6
 7963 ZG Ruinen
 The Netherlands
 T: +31 (0)522 47 17 44
 F: +31 (0)522 47 25 17
 E: mail@beargrip.nl
 I: www.beargrip.com

MM HEXAGONAL KEYS ISO 2936 (DIN 911), 54°-56° HRc
INCH HEXAGONAL KEYS BS 2470, 54°-56° HRc

STIFTSLEUTELS, ZWARTE UITVOERING
 HEXAGONAL KEYS, BLACK FINISH
 SECHSKANTSTIFTSCHLÜSSEL, SCHWARZE AUSFÜHRUNG
 CLÉS SIX-PANS MÂLES, FINITION NOIRE
 LLAVES HEXAGONALES, PAVONADAS

SET IN WALLET

12

MM = 2219	○	1½ - 2 - 2½ - 3 - 4 - 5 - 6 - 8 - 10	9 keys
INCH = 1219	○	1/16 - 5/64 - 3/32 - 1/8 - 5/32 3/16 - 7/32 - 1/4 - 5/16 - 3/8	10 keys



SET IN WALLET

12

MM = 2229	○	1½ - 2 - 2½ - 3 - 4 - 5 - 6 - 8 10 - 12	10 keys
INCH = 1229	○	1/16 - 5/64 - 3/32 - 1/8 - 5/32 3/16 - 7/32 - 5/16 - 3/8 - 1/2	10 keys



STORAGE BOX

MM = 2260	○	50 keys	2200	1
		50 keys	2200	1½
		50 keys	2200	2
		50 keys	2200	2½
		50 keys	2200	3
		50 keys	2200	4
		50 keys	2200	5
		50 keys	2200	6
		10 keys	2200	7
		25 keys	2200	8
		10 keys	2200	9
		25 keys	2200	10

Total: 470 keys

INCH = 1260	○	50 keys	1200	1/16
		50 keys	1200	5/64
		50 keys	1200	3/32
		50 keys	1200	7/64
		50 keys	1200	1/8
		25 keys	1200	9/64
		25 keys	1200	5/32
		50 keys	1200	3/16
		25 keys	1200	7/32
		50 keys	1200	1/4
		10 keys	1200	9/32
		10 keys	1200	5/16
		25 keys	1200	3/8

Total: 470 keys

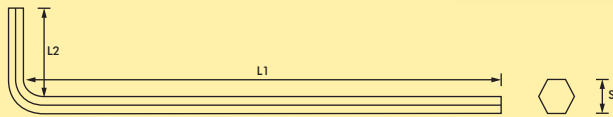


STIFTSLEUTELS
 HEXAGONAL KEYS
 SECHSKANTSTIFTSCHLÜSSEL
 CLÉS SIX-PANS MÂLES
 LLAVES HEXAGONALES



MM = 2400 LONG HEXAGONAL KEYS, ISO 2936L (DIN 911L), 54°-56° HRC

STIFTSLEUTELS LANG, ZWARTE UITVOERING
 HEXAGONAL KEYS LONG, BLACK FINISH
 SECHSKANTSTIFTSCHLÜSSEL LANG, SCHWARZE AUSFÜHRUNG
 CLÉS SIX-PANS MÂLES LONGUE, FINITION NOIRE
 LLAVES HEXAGONALES LARGO, PAVONADAS



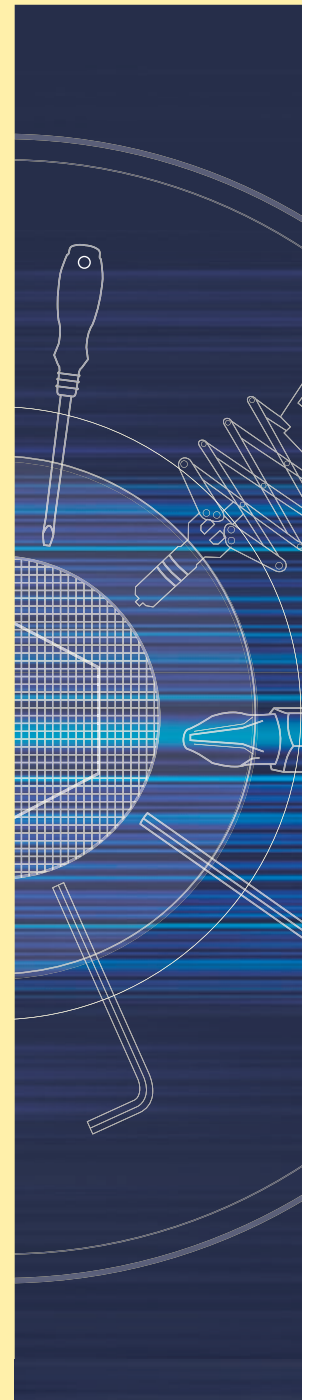
2400 mm	S max mm	S min mm	L1 mm	L2 mm	plastic bags x keys in box	bulk per box
1½	1.500	1.475	90	14	10 x 10	250
2	2.000	1.960	100	16	10 x 10	250
2½	2.500	2.460	112	18	10 x 10	250
3	3.000	2.960	126	20	10 x 10	250
4	4.000	3.952	140	25	5 x 10	250
5	5.000	4.952	160	28	5 x 10	250
6	6.000	5.952	180	32	5 x 10	250
7	7.000	6.942	190	34	5 x 5	250
8	8.000	7.942	200	36	5 x 5	250
9	9.000	8.942	212	38	5 x 5	250
10	10.000	9.942	224	40	4 x 5	250
11	11.000	10.942	240	42	2 x 5	250
12	12.000	11.890	250	45	2 x 5	250
13	13.000	12.890	266	50	2 x 5	250
14	14.000	13.890	280	56	2 x 5	
17	17.000	16.890	320	63	1 x 5	
19	19.000	18.870	360	70	1 x 5	



INCH = 1400 LONG HEXAGONAL KEYS, BS 2470L, 54°-56° HRC

STIFTSLEUTELS LANG, ZWARTE UITVOERING
 HEXAGONAL KEYS LONG, BLACK FINISH
 SECHSKANTSTIFTSCHLÜSSEL LANG, SCHWARZE AUSFÜHRUNG
 CLÉS SIX-PANS MÂLES LONGUE, FINITION NOIRE
 LLAVES HEXAGONALES LARGO, PAVONADAS

1400 inch	S max inch	S min inch	L1 inch	L2 inch	plastic bags x keys in box	bulk per box
1/16	0.0625	0.0615	3.504	0.551	10 x 10	250
5/64	0.0781	0.0771	3.937	0.630	10 x 10	250
3/32	0.0937	0.0927	4.370	0.709	10 x 10	250
7/64	0.1094	0.1079	4.646	0.748	10 x 10	250
1/8	0.1250	0.1235	4.921	0.787	10 x 10	250
9/64	0.1406	0.1391	5.236	0.866	10 x 10	250
5/32	0.1562	0.1547	5.551	0.984	5 x 10	250
3/16	0.1875	0.1860	6.299	1.102	5 x 10	250
7/32	0.2187	0.2172	7.126	1.260	5 x 10	250
1/4	0.2500	0.2485	7.520	1.299	5 x 5	250
9/32	0.2812	0.2797	7.323	1.093	5 x 5	250
5/16	0.3125	0.3110	7.756	1.417	5 x 5	250
3/8	0.3750	0.3735	8.386	1.575	4 x 5	250
7/16	0.4375	0.4355	8.594	1.594	2 x 5	250
1/2	0.5000	0.4975	9.094	1.772	2 x 5	
9/16	0.5625	0.5600	9.094	1.844	2 x 5	
5/8	0.6250	0.6225	9.844	1.969	1 x 5	
3/4	0.7500	0.7470	11.344	2.219	1 x 5	



Beargrip Tool Mfg. Co.
 P.O. Box 6
 7963 ZG Ruinen
 The Netherlands
 T: +31 (0)522 47 17 44
 F: +31 (0)522 47 25 17
 E: mail@beargrip.nl
 I: www.beargrip.com

MM LONG HEXAGONAL KEYS, ISO 2936L (DIN 911L), 54°-56° HRc
INCH LONG HEXAGONAL KEYS, BS 2470L, 54°-56° HRc

STIFTSLEUTELS LANG, ZWARTE UITVOERING
 HEXAGONAL KEYS LONG, BLACK FINISH
 SECHSKANTSTIFTSCHLÜSSEL LANG, SCHWARZE AUSFÜHRUNG
 CLÉS SIX-PANS MÂLES LONGUE, FINITION NOIRE
 LLAVES HEXAGONALES LARGO, PAVONADAS

SET IN BLISTER

6

MM = 2446	○	1½ - 2 - 2½ - 3 - 4 - 5 - 6 - 8 - 10	9 keys
INCH = 1446	○	1/16 - 5/64 - 3/32 - 1/8 - 5/32 3/16 - 1/4 - 5/16 - 3/8	9 keys



SET ON RING IN BLISTER

6

MM = 2429	○	2 - 2½ - 3 - 4 - 5 - 6 - 8 - 10	8 keys
INCH = 1429	○	5/64 - 3/32 - 1/8 - 5/32 - 3/16 7/32 - 1/4 - 5/16 - 3/8	9 keys

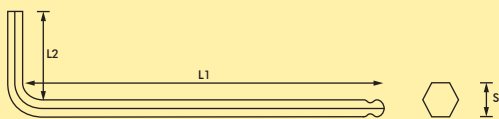


STIFTSLEUTELS
 HEXAGONAL KEYS
 SECHSKANTSTIFTSCHLÜSSEL
 CLÉS SIX-PANS MÂLES
 LLAVES HEXAGONALES



MM = 2311 BALL ENDED HEXAGONAL KEYS, ISO 2936 (DIN 911), 54°-56° HRC

STIFTSLEUTELS MET KOGELKOP, ZWARTE UITVOERING
 HEXAGONAL KEYS BALL ENDED, BLACK FINISH
 SECHSKANTSTIFTSCHLÜSSEL MIT KUGELKOPF, SCHWARZE AUSFÜHRUNG
 CLÉS SIX-PANS MÂLES SPHERIQUE, FINITION NOIRE
 LLAVES HEXAGONALES PUNTA BOLA, PAVONADAS

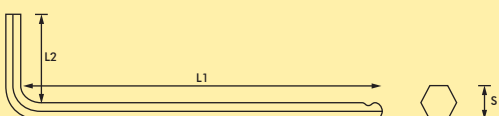


2311 mm	S max mm	S min mm	L1 mm	L2 mm	plastic bags x keys in box	bulk per box
1½	1.500	1.475	68	14	10 x 10	250
2	2.000	1.960	75	16	10 x 10	250
2½	2.500	2.460	85	18	10 x 10	250
3	3.000	2.960	95	20	10 x 10	250
4	4.000	3.952	106	25	5 x 10	250
5	5.000	4.952	120	28	5 x 10	250
6	6.000	5.952	135	32	5 x 10	250
7	7.000	6.942	140	34	5 x 5	250
8	8.000	7.942	149	36	5 x 5	250
9	9.000	8.942	157	38	5 x 5	250
10	10.000	9.942	168	40	4 x 5	250
12	12.000	11.890	190	45	2 x 5	250

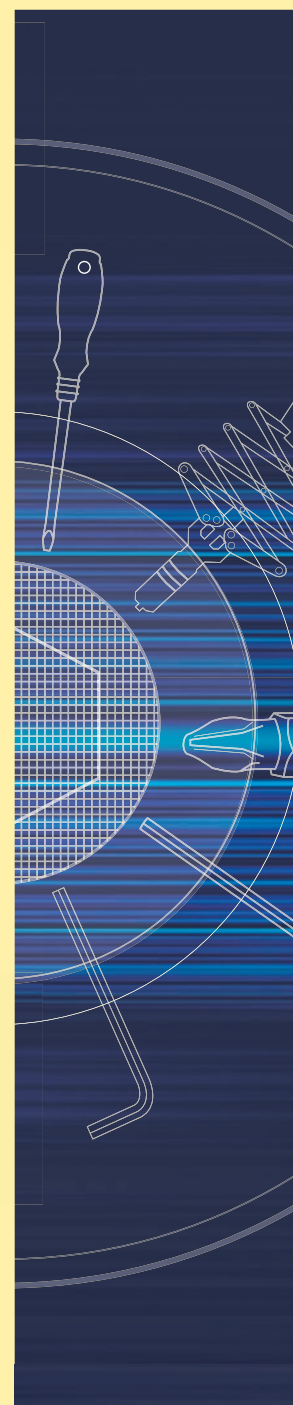


INCH = 1311 BALL ENDED HEXAGONAL KEYS, BS 2470, 54°-56° HRC

STIFTSLEUTELS MET KOGELKOP, ZWARTE UITVOERING
 HEXAGONAL KEYS BALL ENDED, BLACK FINISH
 SECHSKANTSTIFTSCHLÜSSEL MIT KUGELKOPF, SCHWARZE AUSFÜHRUNG
 CLÉS SIX-PANS MÂLES SPHERIQUE, FINITION NOIRE
 LLAVES HEXAGONALES PUNTA BOLA, PAVONADAS



1311 inch	S max inch	S min inch	L1 inch	L2 inch	plastic bags x keys in box	bulk per box
0.050	0.0500	0.0490	2.461	0.492	10 x 10	250
1/16	0.0625	0.0615	2.677	0.551	10 x 10	250
5/64	0.0781	0.0771	3.937	0.630	10 x 10	250
3/32	0.0937	0.0927	4.370	0.709	10 x 10	250
7/64	0.1094	0.1079	4.646	0.748	10 x 10	250
1/8	0.1250	0.1235	4.921	0.787	10 x 10	250
9/64	0.1406	0.1391	5.236	0.866	5 x 10	250
5/32	0.1562	0.1547	5.551	0.984	5 x 10	250
3/16	0.1875	0.1860	6.299	1.102	5 x 10	250
7/32	0.2187	0.2172	7.126	1.260	5 x 5	250
1/4	0.2500	0.2485	7.520	1.299	5 x 5	250
5/16	0.3125	0.3110	7.756	1.417	4 x 5	250
3/8	0.3750	0.3735	8.386	1.575	2 x 5	250



Beargrip Tool Mfg. Co.
 P.O. Box 6
 7963 ZG Ruinen
 The Netherlands

T: +31 (0)522 47 17 44
 F: +31 (0)522 47 25 17

E: mail@beargrip.nl
 I: www.beargrip.com

MM BALL ENDED HEXAGONAL KEYS, ISO 2936 (DIN 911), 54°-56° HRc
INCH BALL ENDED HEXAGONAL KEYS, BS 2470, 54°-56° HRc

STIFTSLEUTELS MET KOGELKOP, ZWARTE UITVOERING
 HEXAGONAL KEYS BALL ENDED, BLACK FINISH
 SECHSKANTSTIFTSCHLÜSSEL MIT KUGELKOPF, SCHWARZE AUSFÜHRUNG
 CLÉS SIX-PANS MÂLES SPHERIQUE, FINITION NOIRE
 LLAVES HEXAGONALES PUNTA BOLA, PAVONADAS

SET IN BLISTER

6

MM = 2346	1 ½ - 2 - 2 ½ - 3 - 4 - 5 - 6 - 8 - 10	9 keys
INCH = 1346	1/16 - 5/64 - 3/32 - 1/8 - 5/32 3/16 - 1/4 - 5/16 - 3/8	9 keys

Please see page 8 for sizes L1 and L2



SET IN BLISTER

6

MM = 2346XL	1 ½ - 2 - 2 ½ - 3 - 4 - 5 - 6 - 8 - 10	9 keys
-------------	----------------------------------------	--------

2311XL	L1	L2
1 ½	90	14
2	100	16
2 ½	112	18
3	126	20
4	140	25
5	160	28
6	180	32
8	200	36
10	224	40

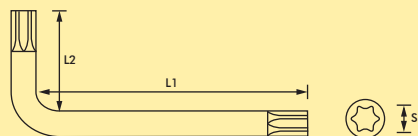


STIFTSLEUTELS
 HEXAGONAL KEYS
 SECHSKANTSTIFTSCHLÜSSEL
 CLÉS SIX-PANS MÂLES
 LLAVES HEXAGONALES



= 2600 TORQUE KEYS, 54°-56° HRc

TORSIESLEUTELS, ZWARTE UITVOERING
 TORQUE KEYS, BLACK FINISH
 TORSIONS SCHLÜSSEL, SCHWARZE AUSFÜHRUNG
 CLÉS TORSION, FINITION NOIRE
 LLAVES TORQUE, PAVONADAS

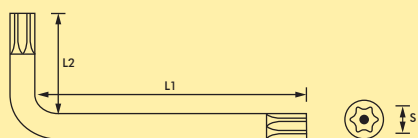


Tx (S)	L1 mm	L2 mm	single packed	plastic bags x keys in box	bulk per box
6	48	16	1	5 x 10	250
7	48	16	1	5 x 10	250
8	48	16	1	5 x 10	250
9	48	16	1	5 x 10	250
10	51	17	1	5 x 10	250
15	54	18	1	5 x 10	250
20	57	19	1	5 x 10	250
25	60	20	1	5 x 10	250
27	63	22	1	5 x 10	250
30	70	24	1	5 x 5	250
40	76	26	1	5 x 5	250
45	83	29	1	5 x 5	250
50	95	32		2 x 5	250
55	108	35		2 x 5	250
60	121	38		2 x 5	250

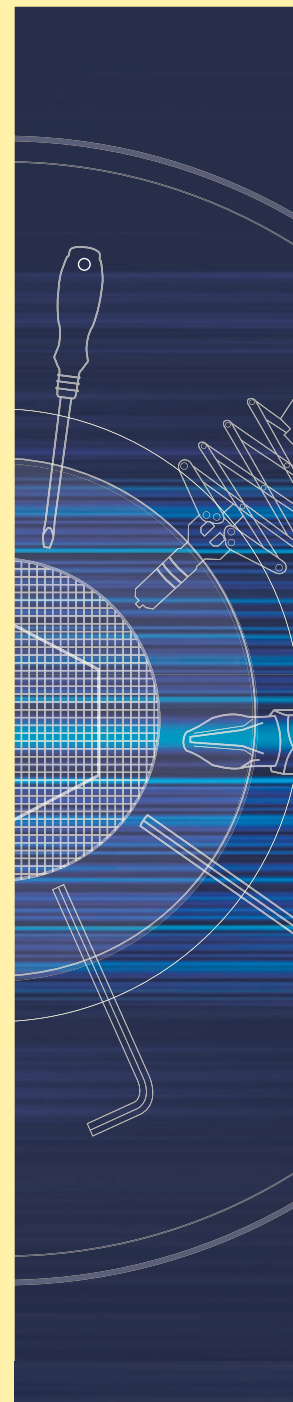


= 2600R TORQUE KEYS WITH HOLE, 54°-56° HRc

TORSIESLEUTELS MET GAT, ZWARTE UITVOERING
 TORQUE KEYS WITH HOLE, BLACK FINISH
 TORSIONS SCHLÜSSEL MIT BOHRUNG, SCHWARZE AUSFÜHRUNG
 CLÉS TORSION TEMPER RESISTANT, FINITION NOIRE
 LLAVES TORQUE INVOLABLE, PAVONADAS



Tx.R (S)	L1 mm	L2 mm	single packed	plastic bags x keys in box	bulk per box
6	48	16	1	5 x 10	250
7	48	16	1	5 x 10	250
8	48	16	1	5 x 10	250
9	48	16	1	5 x 10	250
10	51	17	1	5 x 10	250
15	54	18	1	5 x 10	250
20	57	19	1	5 x 10	250
25	60	20	1	5 x 10	250
27	63	22	1	5 x 10	250
30	70	24	1	5 x 5	250
40	76	26	1	5 x 5	250
45	83	29	1	5 x 5	250
50	95	32		2 x 5	250
55	108	35		2 x 5	250



Beargrip Tool Mfg. Co.

P.O. Box 6

7963 ZG Ruinen

The Netherlands

T: +31 (0)522 47 17 44

F: +31 (0)522 47 25 17

E: mail@beargrip.nl

I: www.beargrip.com



TORQUE KEYS, 54°-56° HRc

TORSIESLEUTELS, ZWARTE UITVOERING
 TORQUE KEYS, BLACK FINISH
 TORSIONS SCHLÜSSEL, SCHWARZE AUSFÜHRUNG
 CLÉS TORSION, FINITION NOIRE
 LLAVES TORQUE, PAVONADAS

SET IN BLISTER

12

2646		Tx. 8 - 9 - 10 - 15 - 20 - 25 - 27 30 - 40	9 keys
------	--	-----------------------------------------------	--------



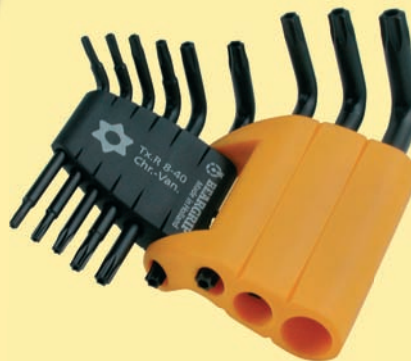
TORQUE KEYS WITH HOLE, 54°-56° HRc

TORSIESLEUTELS MET GAT, ZWARTE UITVOERING
 TORQUE KEYS WITH HOLE, BLACK FINISH
 TORSIONS SCHLÜSSEL MIT BOHRUNG, SCHWARZE AUSFÜHRUNG
 CLÉS TORSION TEMPER RESISTANT, FINITION NOIRE
 LLAVES TORQUE INVOLABLE, PAVONADAS

SET IN BLISTER

12

2646R		Tx.R 8 - 9 - 10 - 15 - 20 - 25 - 27 30 - 40	9 keys
-------	--	------------------------------------------------	--------



TORSIESLEUTELS
 TORQUE KEYS
 TORSIONS SCHLÜSSEL
 CLÉS TORSION
 LLAVES TORQUE





TORQUE KEYS, 54°-56° HRC

TORSIESLEUTELS, ZWARTE UITVOERING
TORQUE KEYS, BLACK FINISH
TORSIONS SCHLÜSSEL, SCHWARZE AUSFÜHRUNG
CLÉS TORSION, FINITION NOIRE
LLAVES TORQUE, PAVONADAS

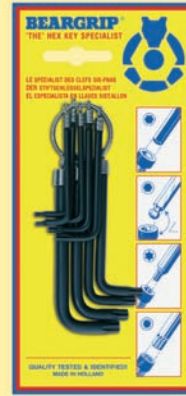
SET ON RING IN BLISTER

12

2620		Tx. 8 - 9 - 10 - 15 - 20 - 25 - 27 30 - 40	9 keys
2621		Tx. 15 - 20 - 25 - 27 - 30 - 40 45 - 50 - 55	9 keys
2623R		Tx.R 9 - 10 - 15 - 20 - 25 - 27 30 - 40	8 keys



MET GAT, ZWARTE UITVOERING
WITH HOLE, BLACK FINISH
MIT BOHRUNG, SCHWARZE AUSFÜHRUNG
TEMPER RESISTANT, FINITION NOIRE
INVIOLEBIL, PAVONADAS



PLASTIC BOX

12

2622		Tx. 9 - 10 - 15 - 20 - 25 - 27 30 - 40	8 keys
------	--	-------------------------------------------	--------



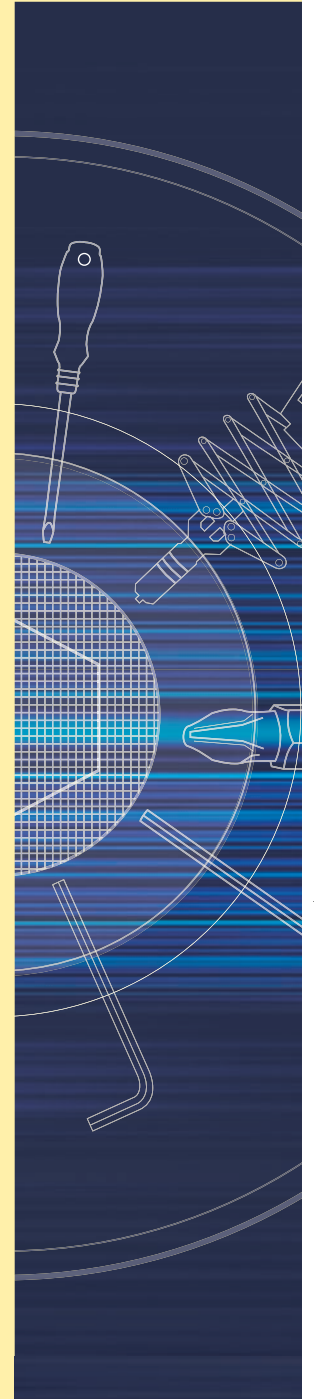
STORAGE BOX

2660		50 keys	2600	6
		50 keys	2600	7
		50 keys	2600	8
		50 keys	2600	9
		50 keys	2600	10
		50 keys	2600	15
		50 keys	2600	20
		50 keys	2600	25
		50 keys	2600	27
		25 keys	2600	30
		25 keys	2600	40
		10 keys	2600	45
10 keys	2600	50		

Total: 520 keys

2660R		50 keys	2600R	6
		50 keys	2600R	7
		50 keys	2600R	8
		50 keys	2600R	9
		50 keys	2600R	10
		50 keys	2600R	15
		50 keys	2600R	20
		50 keys	2600R	25
		50 keys	2600R	27
		25 keys	2600R	30
		25 keys	2600R	40
		10 keys	2600R	45
10 keys	2600R	50		

Total: 520 keys



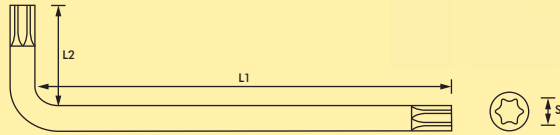
Beargrip Tool Mfg. Co.
P.O. Box 6
7963 ZG Ruinen
The Netherlands

T: +31 (0)522 47 17 44
F: +31 (0)522 47 25 17

E: mail@beargrip.nl
I: www.beargrip.com

 = 2800 **TORQUE KEYS LONG, 54°-56° HRC**

TORSIESLEUTELS LANG, ZWARTE UITVOERING
 TORQUE KEYS LONG, BLACK FINISH
 TORSIONS SCHLÜSSEL LANG, SCHWARZE AUSFÜHRUNG
 CLÉS TORSION LONGUE, FINITION NOIRE
 LLAVES TORQUE LARGA, PAVONADAS




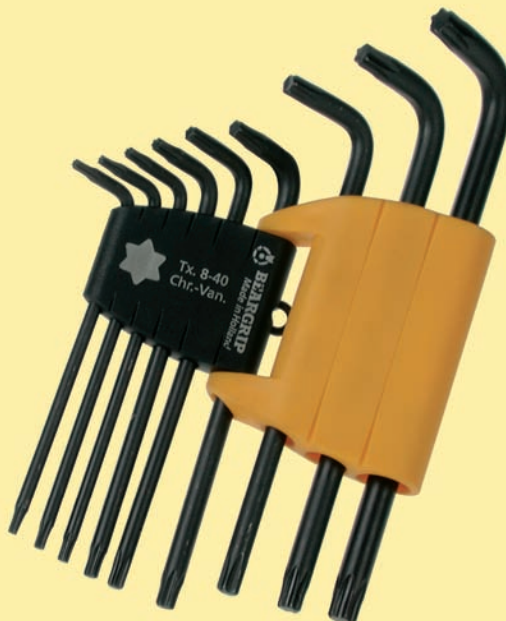
Tx	L1	L2	single	plastic bags	bulk
(S)	mm	mm	packed	x keys in box	per box
8	78	16	1	5 x 10	250
9	82	16	1	5 x 10	250
10	86	17	1	5 x 10	250
15	90	18	1	5 x 10	250
20	95	19	1	5 x 10	250
25	100	20	1	5 x 10	250
27	105	22	1	5 x 10	250
30	114	24	1	5 x 5	250
40	124	26	1	5 x 5	250



SET IN BLISTER

6

2846	 Tx. 8 - 9 - 10 - 15 - 20 - 25 27 - 30 - 40	9 keys
------	-----------------------------------------------------------------------------------------------------------------------------------	--------



TORSIESLEUTELS
 TORQUE KEYS
 TORSIONS SCHLÜSSEL
 CLÉS TORSION
 LLAVES TORQUE



MM SOFTGRIP FUTURO POCKET KNIFE SETS, ISO 2936 (DIN 911), 54°-56° HRc
INCH SOFTGRIP FUTURO POCKET KNIFE SETS, BS 2470, 54°-56° HRc

STIFTSLEUTELS, TORSIESLEUTEL, KOGELKOP SLEUTELS, ZWARTE UITVOERING
 HEXAGONAL KEYS, TORQUE KEYS, BALL ENDED KEYS, BLACK FINISH
 SECHSKANTSTIFTSCHL., TORSIONS SCHLÜSSEL, SCHLÜSSEL MIT KUGELKOPF, SCHWARZE AUSFÜHRUNG
 CLÉS SIX-PANS MÂLES, CLÉS TORSION, CLÉS MÂLES SPHERIQUE, FINITION NOIRE
 LLAVES HEXAGONALES, LLAVES TORQUE, LLAVES PUNTA BOLA, PAVONADAS

SET WITH CARD

Hex - MM

12

MM = 2281	⊙	1½ - 2 - 2½ - 3 - 4 - 5 - 6 - 8	8 keys
MM = 2282	⊙	2½ - 3 - 4 - 5 - 6 - 8 - 10	7 keys



SET WITH CARD

Hex - INCH

12

INCH = 1281	⊙	1/16 - 5/64 - 3/32 - 1/8 - 5/32 3/16 - 1/4 - 5/16	8 keys
INCH = 1282	⊙	3/32 - 1/8 - 5/32 - 3/16 - 1/4 5/16 - 3/8	7 keys

SET WITH CARD

Ball - MM

12

MM = 2382	⊙	2½ - 3 - 4 - 5 - 6 - 8 - 10	7 keys
-----------	---	-----------------------------	--------



Ball - INCH

12

INCH = 1382	⊙	3/32 - 1/8 - 5/32 - 3/16 - 1/4 5/16 - 3/8	7 keys
-------------	---	----------------------------------------------	--------



SET WITH CARD

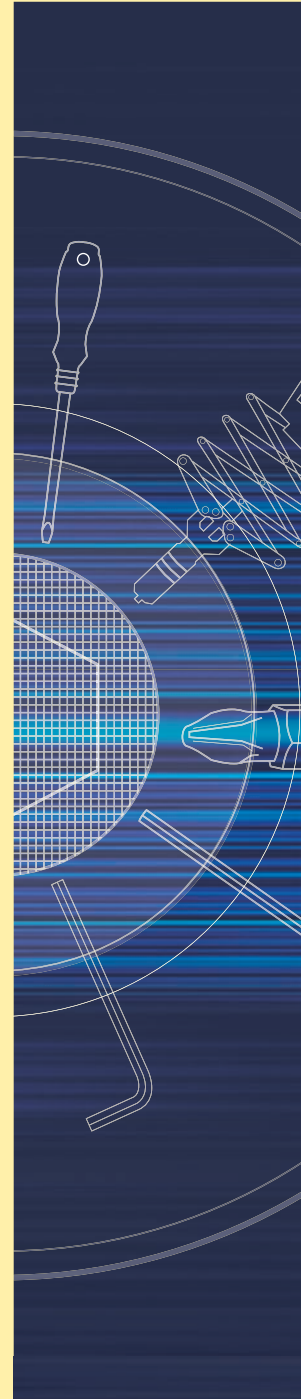
Tx.

12

2682	⊕	Tx. 9 - 10 - 15 - 20 - 25 - 27 - 30 40	8 keys
------	---	-------------------------------------------	--------



2682R	⊕	Tx.R 9 - 10 - 15 - 20 - 25 - 27 30 - 40	8 keys
-------	---	--------------------------------------------	--------



Beargrip Tool Mfg. Co.
 P.O. Box 6
 7963 ZG Ruinen
 The Netherlands

T: +31 (0)522 47 17 44
 F: +31 (0)522 47 25 17

E: mail@beargrip.nl
 I: www.beargrip.com

	INDUSTRIE FORUM DESIGN HANNOVER	AWARD FOR GOOD INDUSTRIAL DESIGN HANNOVER	AUSZEICHNUNG FÜR GUTES DESIGN HANNOVER	PREMIO DESIGN INDUSTRIALE HANNOVER	PRIMÉ PAR LE INDUSTRY FORUM DESIGN HANNOVER
--	------------------------------------------	----------------------------------------------------	-------------------------------------------------	---------------------------------------------	------------------------------------------------------

MM FUTURO POCKET KNIFE SETS, ISO 2936 (DIN 911), 54°-56° HRc
INCH FUTURO POCKET KNIFE SETS, BS 2470, 54°-56° HRc

STIFTSLEUTELS, KOEGELKOP SLEUTELS, ZWARTE UITVOERING
 HEXAGONAL KEYS, BALL ENDED KEYS, BLACK FINISH
 SECHSKANTSTIFTSCHLÜSSEL, SCHLÜSSEL MIT KUGELKOPF, SCHWARZE AUSFÜHRUNG
 CLÉS SIX-PANS MÂLES, CLÉS MÂLES SPHERIQUE, FINITION NOIRE
 LLAVES HEXAGONALES, LLAVES PUNTA BOLA, PAVONADAS

SET WITH CARD

Hex - MM

12

MM = 2290	⊙	1½ - 2 - 2½ - 3 - 4 - 5 - 6	7 keys
MM = 2291	⊙	2½ - 3 - 4 - 5 - 6 - 8	6 keys
MM = 2292	⊙	2½ - 3 - 4 - 5 - 6 - 8 - 10	7 keys



SET WITH CARD

Hex - INCH

12

INCH = 1290	⊙	1/16 - 5/64 - 3/32 - 1/8 - 5/32 3/16 - 7/32	7 keys
INCH = 1291	⊙	3/32 - 1/8 - 5/32 - 3/16 - 1/4 5/16	6 keys
INCH = 1292	⊙	3/32 - 1/8 - 5/32 - 3/16 - 1/4 5/16 - 3/8	7 keys



SET WITH CARD

Ball - MM

12

MM = 2392	⊙	2½ - 3 - 4 - 5 - 6 - 8 - 10	7 keys
-----------	---	-----------------------------	--------

Ball - INCH

12

INCH = 1392	⊙	3/32 - 1/8 - 5/32 - 3/16 - 1/4 5/16 - 3/8	7 keys
-------------	---	----------------------------------------------	--------



SET WITH CARD

Tx.

12

2692	⊙	Tx. 9 - 10 - 15 - 20 - 25 - 27 - 30 40	8 keys
------	---	-------------------------------------------	--------

SET WITH CARD

Tx.R

12

2690R	⊙	Tx.R 6 - 7 - 8 - 9 - 10 - 15 - 20 25	8 keys
2692R	⊙	Tx.R 9 - 10 - 15 - 20 - 25 - 27 30 - 40	8 keys



STIFTSLEUTELS
 HEXAGONAL KEYS
 SECHSKANTSTIFTSCHLÜSSEL
 CLÉS SIX-PANS MÂLES
 LLAVES HEXAGONALES



INDUSTRIE FORUM DESIGN HANNOVER	AWARD FOR GOOD INDUSTRIAL DESIGN HANNOVER	AUSZEICHNUNG FÜR GUTES DESIGN HANNOVER	PREMIO DESIGN INDUSTRIALE HANNOVER	PRIMÉ PAR LE INDUSTRY FORUM DESIGN HANNOVER
---------------------------------	-------------------------------------------	----------------------------------------	------------------------------------	---------------------------------------------

MM METAL HOLDER POCKET KNIFE SETS, ISO 2936 (DIN 911), 54°-56° HRc
INCH METAL HOLDER POCKET KNIFE SETS, BS 2470, 54°-56° HRc

STIFTSLEUTELS, ZWARTE UITVOERING
 HEXAGONAL KEYS, BLACK FINISH
 SECHSKANTSTIFTSCHLÜSSEL, SCHWARZE AUSFÜHRUNG
 CLÉS SIX-PANS MÂLES, FINITION NOIRE
 LLAVES HEXAGONALES, PAVONADAS

SET WITH CARD

Combi - MM

12

7190	⊖	⊕	⊙	5.5 Ph.2 1½-2-2½-3-4	7 keys
------	---	---	---	----------------------	--------

7191	⊖	⊕	⊙	5.5 Ph.1 2-2½-3-4-5-6	8 keys
------	---	---	---	-----------------------	--------



SET WITH CARD

Hex - MM

12

MM = 2230	⊙	1½-2-2½-3-4-5-6	7 keys
MM = 2231	⊙	2½-3-4-5-6-8	6 keys
MM = 2232	⊙	2½-3-4-5-6-8-10	7 keys



SET WITH CARD

Tx.

12

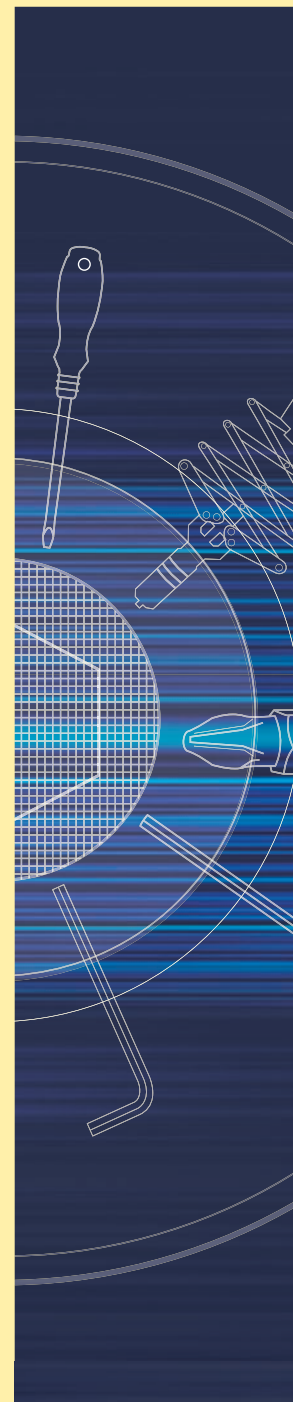
2632	⊙	Tx. 9-10-15-20-25-27 30-40	8 keys
------	---	-------------------------------	--------



XZN

12

XZN = 2732	⊙	M 5-6-8-10-12	5 keys
------------	---	---------------	--------



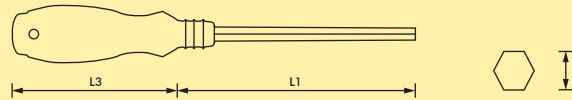
Beargrip Tool Mfg. Co.
 P.O. Box 6
 7963 ZG Ruinen
 The Netherlands

T: +31 (0)522 47 17 44
 F: +31 (0)522 47 25 17

E: mail@beargrip.nl
 I: www.beargrip.com

MM = 2300 HEXAGONAL KEYS ON HANDLE, ISO 2936 (DIN 911), 54°-56° HRc
INCH = 1300 HEXAGONAL KEYS ON HANDLE, BS 2470, 54°-56° HRc

STIFTSLEUTELS OP GREEP, ZWARTE UITVOERING
 HEXAGONAL KEYS ON HANDLE, BLACK FINISH
 SECHSKANTSTIFTSCHLÜSSEL MIT GRIFF, SCHWARZE AUSFÜHRUNG
 CLÉS SIX-PANS MÂLES AVEC MANCHE, FINITION NOIRE
 LLAVES HEXAGONALES CON MANGO, PAVONADAS



MM (S)	L1 mm	L3 mm	INCH (S)	L1 inch	L3 inch
1½	75	75	5/64	3	3
2	75	75	3/32	3	3
2½	75	75	1/8	4	3½
3	120	90	5/32	4	3½
4	120	90	3/16	5	4
5	125	100	7/32	5	4
6	180	100	1/4	7	4
8	185	110	5/16	7	4¾
10	185	110	3/8	7	4¾



12

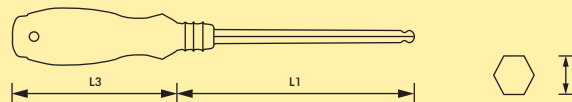


SET IN WALLET

MM = 2305	2 - 2½ - 3 - 4 - 5 - 6 - 8 - 10	8 keys
INCH = 1305	5/64 - 3/32 - 1/8 - 5/32 - 3/16 - 7/32 - 1/4 - 5/16 - 3/8	9 keys

MM = 2310 BALL ENDED HEXAGONAL KEYS ON HANDLE ISO 2936 (DIN 911), 54°-56° HRc
INCH = 1310 BALL ENDED HEXAGONAL KEYS ON HANDLE BS 2470, 54°-56° HRc

STIFTSLEUTELS OP GREEP MET KOGELKOP, ZWARTE UITVOERING
 HEXAGONAL KEYS ON HANDLE BALL ENDED, BLACK FINISH
 SECHSKANTSTIFTSCHLÜSSEL MIT GRIFF MIT KUGELKOPF, SCHWARZE AUSFÜHRUNG
 CLÉS SIX-PANS MÂLES SPHERIQUE AVEC MANCHE, FINITION NOIRE
 LLAVES HEXAGONALES PUNTA BOLA CON MANGO, PAVONADAS



MM (S)	L1 mm	L3 mm	INCH (S)	L1 inch	L3 inch
2	75	75	5/64	3	3
2½	75	75	3/32	3	3
3	120	90	1/8	4	3½
4	120	90	5/32	4	3½
5	125	100	3/16	5	4
6	180	100	7/32	5	4
8	185	110	1/4	7	4
10	185	110	5/16	7	4¾
			3/8	7	4¾



12



SET IN WALLET

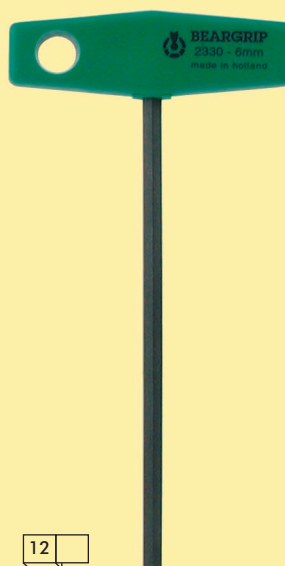
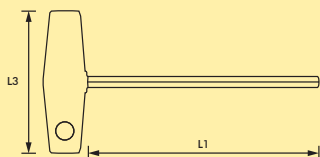
MM = 2315	2 - 2½ - 3 - 4 - 5 - 6 - 8 - 10	8 keys
INCH = 1315	5/64 - 3/32 - 1/8 - 5/32 - 3/16 - 7/32 - 1/4 - 5/16 - 3/8	9 keys

STIFTSLEUTELS
 HEXAGONAL KEYS
 SECHSKANTSTIFTSCHLÜSSEL
 CLÉS SIX-PANS MÂLES
 LLAVES HEXAGONALES



MM = 2330 HEXAGONAL KEYS ON T-HANDLE, ISO 2936 (DIN 911), 54°-56° HRc
INCH = 1330 HEXAGONAL KEYS ON T-HANDLE, BS 2470, 54°-56° HRc

STIFTSLEUTELS OP T-GREEP, ZWARTE UITVOERING
 HEXAGONAL KEYS ON T-HANDLE, BLACK FINISH
 SECHSKANTSTIFTSCHLÜSSEL MIT T-GRIFF, SCHWARZE AUSFÜHRUNG
 CLÉS SIX-PANS MÂLES AVEC MANCHE-T, FINITION NOIRE
 LLAVES HEXAGONALES CON MANGO-T, PAVONADAS



MM (S)	L1 mm	L3 mm
2	100	90
2½	100	90
3	100	90
4	100	90
5	100	90
6	100	90
8	100	90
10	100	110

INCH (S)	L1 inch	L3 inch
3/32	6	3½
7/64	6	3½
1/8	6	3½
9/64	6	3½
5/32	6	3½
3/16	6	3½
7/32	6	3½
1/4	6	3½
5/16	6	3½
3/8	6	4¾

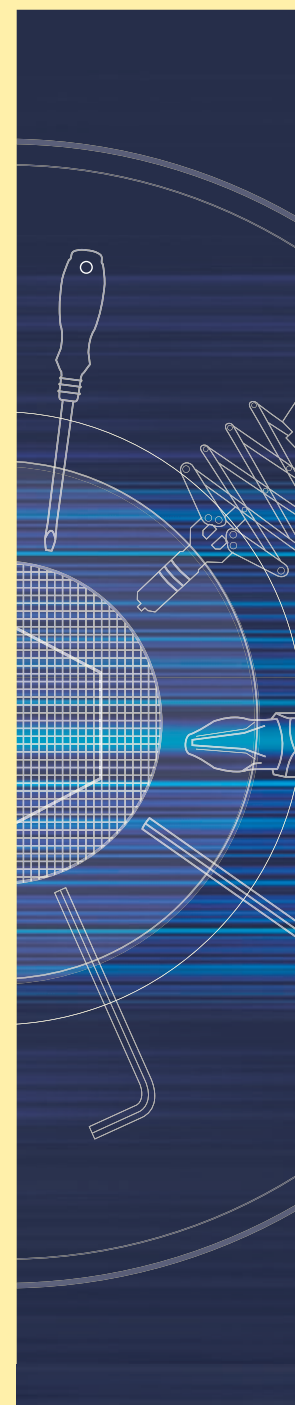
2	150	90
2½	150	90
3	150	90
4	150	90
5	150	90
6	150	90
8	150	90
10	150	110

4	200	90
5	200	90
6	200	90
8	200	90
10	200	110



DISPLAY

2335	100 mm	○	2 - 2½ - 3 - 4 - 5 - 6 - 8 - 10	8 keys
2335	150 mm	○	2 - 2½ - 3 - 4 - 5 - 6 - 8 - 10	8 keys
2335	200 mm	○	2 - 2½ - 3 (150 mm) 4 - 5 - 6 - 8 - 10 (200 mm)	8 keys
1335	6 inch	○	3/32 - 1/8 - 5/32 - 3/16 - 7/32 1/4 - 5/16 - 3/8	8 keys



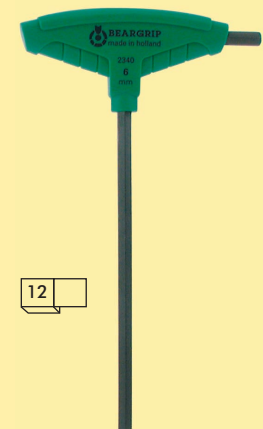
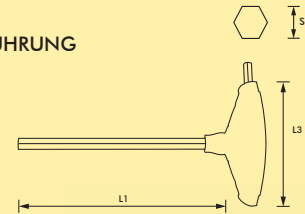
Beargrip Tool Mfg. Co.
 P.O. Box 6
 7963 ZG Ruinen
 The Netherlands
 T: +31 (0)522 47 17 44
 F: +31 (0)522 47 25 17
 E: mail@beargrip.nl
 I: www.beargrip.com

MM = 2340 HEXAGONAL KEYS ON T-HANDLE, ISO 2936 (DIN 911), 54°-56° HRC
INCH = 1340 HEXAGONAL KEYS ON T-HANDLE, BS 2470, 54°-56° HRC

STIFTSLEUTELS OP T-GREEP, ZWARTE UITVOERING
 HEXAGONAL KEYS ON T-HANDLE, BLACK FINISH
 SECHSKANTSTIFTSCHLÜSSEL MIT T-GRIFF, SCHWARZE AUSFÜHRUNG
 CLÉS SIX-PANS MÂLES AVEC MANCHE-T, FINITION NOIRE
 LLAVES HEXAGONALES CON MANGO-T, PAVONADAS

MM (S)	L1 mm	L3 mm
2	150	75
2½	150	75
3	150	75
4	150	90
5	150	90
6	150	90
8	150	110
10	150	110

INCH (S)	L1 inch	L3 inch
5/64	6	3
3/32	6	3
7/64	6	3
1/8	6	3
9/64	6	3
5/32	6	3½
3/16	6	3½
7/32	6	3½
1/4	6	3½
5/16	6	4¾
3/8	6	4¾



12



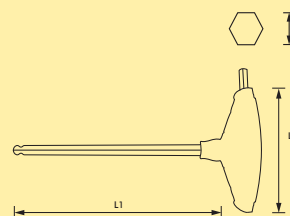
DISPLAY

2345	150 mm	⊙	2 - 2½ - 3 - 4 - 5 - 6 - 8 - 10	8 keys
1345	6 inch	⊙	3/32 - 1/8 - 5/32 - 3/16 - 7/32 - 1/4 - 5/16 - 3/8	8 keys

MM = 2341 HEXAGONAL KEYS ON T-HANDLE, ISO 2936 (DIN 911), 54°-56° HRC

STIFTSLEUTELS OP T-GREEP MET KOGELKOP, ZWARTE UITVOERING
 HEXAGONAL KEYS ON T-HANDLE BALL ENDED, BLACK FINISH
 SECHSKANTSTIFTSCHLÜSSEL MIT T-GRIFF MIT KUGELKOPF, SCHWARZE AUSFÜHRUNG
 CLÉS SIX-PANS MÂLES SPHERIQUE AVEC MANCHE-T, FINITION NOIRE
 LLAVES HEXAGONALES PUNTA BOLA CON MANGO-T, PAVONADAS

MM (S)	L1 mm	L3 mm
2	150	75
2½	150	75
3	150	75
4	150	90
5	150	90
6	150	90
8	150	110
10	150	110



12



DISPLAY

2350	150 mm	⊙	2 - 2½ - 3 - 4 - 5 - 6 - 8 - 10	8 keys
------	--------	---	---------------------------------	--------

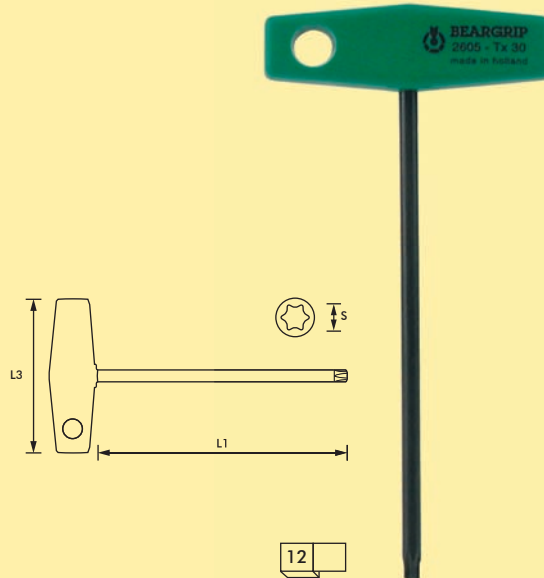
STIFTSLEUTELS
 HEXAGONAL KEYS
 SECHSKANTSTIFTSCHLÜSSEL
 CLÉS SIX-PANS MÂLES
 LLAVES HEXAGONALES



☼ = 2605 TORQUE KEYS ON T-HANDLE, 54°-56° HRc

TORSIESLEUTELS OP T-GREEP, ZWARTE UITVOERING
 TORQUE KEYS ON T-HANDLE, BLACK FINISH
 TORSIONS SCHLÜSSEL MIT T-GRIFF, SCHWARZE AUSFÜHRUNG
 CLÉS TORSION AVEC MANCHE, FINITION NOIRE
 LLAVES TORQUE CON MANGO, PAVONADAS

Tx. (S)	L1 mm	L3 mm
8	150	90
9	150	90
10	150	90
15	150	90
20	150	90
25	150	90
27	150	90
30	150	90
40	150	90
45	150	110
50	150	110
55	150	110



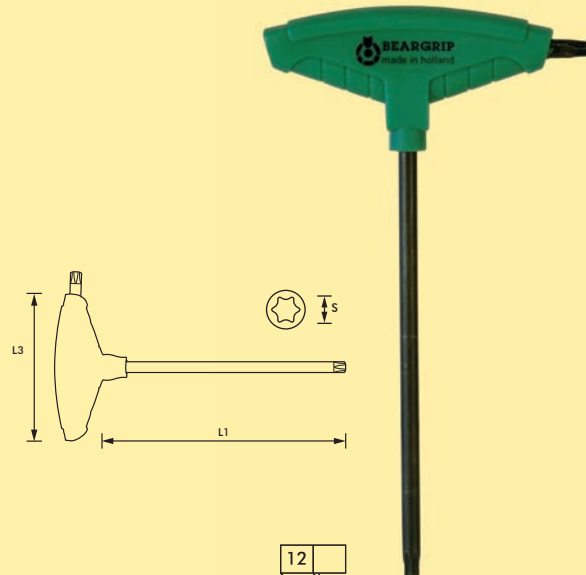
DISPLAY

2635 ☼ Tx. 9 - 10 - 15 - 20 - 25 - 27 - 30 - 40 8 keys

☼ = 2640 TORQUE KEYS ON T-HANDLE, 54°-56° HRc

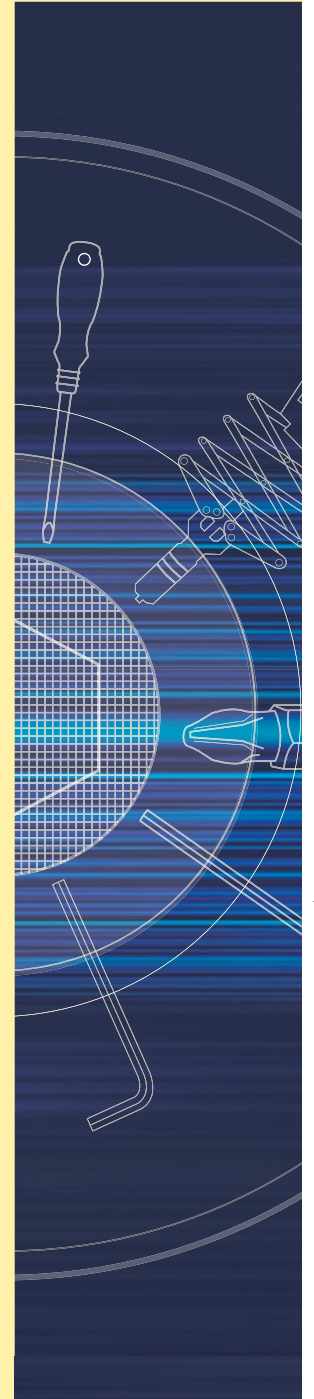
TORSIESLEUTELS OP T-GREEP, ZWARTE UITVOERING
 TORQUE KEYS ON T-HANDLE, BLACK FINISH
 TORSIONS SCHLÜSSEL MIT T-GRIFF, SCHWARZE AUSFÜHRUNG
 CLÉS TORSION AVEC MANCHE, FINITION NOIRE
 LLAVES TORQUE CON MANGO, PAVONADAS

Tx. (S)	L1 mm	L3 mm
8	150	75
9	150	75
10	150	75
15	150	90
20	150	90
25	150	90
27	150	90
30	150	90
40	150	90
45	150	110
50	150	110
55	150	110



DISPLAY

2645 ☼ Tx. 9 - 10 - 15 - 20 - 25 - 27 - 30 - 40 8 keys

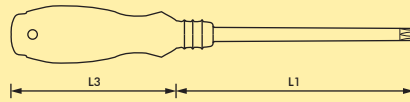


Beargrip Tool Mfg. Co.
 P.O. Box 6
 7963 ZG Ruinen
 The Netherlands
 T: +31 (0)522 47 17 44
 F: +31 (0)522 47 25 17
 E: mail@beargrip.nl
 I: www.beargrip.com

☼ = 2610

**TORQUE KEYS ON HANDLE,
54°-56° HRc**

TORSIESLEUTELS, ZWARTE UITVOERING
TORQUE KEYS, BLACK FINISH
TORSIONS SCHLÜSSEL, SCHWARZE AUSFÜHRUNG
CLÉS TORSION, FINITION NOIRE
LLAVES TORQUE, PAVONADAS

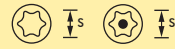


Tx. (S)	L1 mm	L3 mm
8	165	75
9	165	75
10	165	75
15	165	90
20	165	90
25	170	90
27	170	90
30	170	100
40	170	100
45	170	110
50	170	110
55	170	110

☼ = 2610R

**TORQUE KEYS WITH HOLE,
ON HANDLE 54°-56° HRc**

MET GAT, ZWARTE UITVOERING
WITH HOLE, BLACK FINISH
MIT BOHRUNG, SCHWARZE AUSFÜHRUNG
TEMPER RESISTANT, FINITION NOIRE
INVOLABLE, PAVONADAS



Tx.R (S)	L1 mm	L3 mm
6	165	75
7	165	75
8	165	75
9	165	75
10	165	75
15	170	90
20	170	90
25	170	90
27	170	90
30	170	100
40	170	100



12

SET IN WALLET

2615	☼	Tx. 8 - 9 - 10 - 15 - 20 - 25 - 27 30 - 40	9 keys
------	---	-----------------------------------------------	--------

2615R	☼	Tx.R 8 - 9 - 10 - 15 - 20 - 25 27 - 30 - 40	9 keys
-------	---	------------------------------------------------	--------

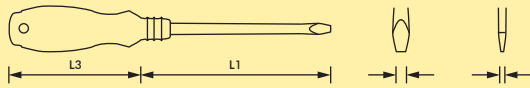



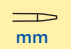
TORSIESLEUTELS
TORQUE KEYS
TORSIONS SCHLÜSSEL
CLÉS TORSION
LLAVES TORQUE



⊖ = 710 MECHANICS SCREWDRIVERS, ISO 2380 (DIN 5265)

SCHROEVENDRAAIERS
SCREWDRIVERS
SCHRAUBENDREHER
TOURNEVIS
DESTORNILLADORES

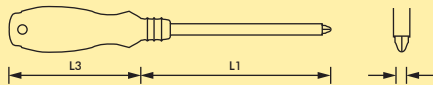


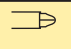
	L1 mm		∅ mm	L3 mm
2½	75	0.4	2½	75
3	100	0.5	3	75
4	100	0.8	4	90
5½	125	1.0	5½	100
6½	150	1.2	6	100
8	175	1.2	7	110
10	200	1.6	8	110



⊕ = 711 MECHANICS SCREWDRIVERS, ISO 8764 (DIN 5262)

SCHROEVENDRAAIERS
SCREWDRIVERS
SCHRAUBENDREHER
TOURNEVIS
DESTORNILLADORES

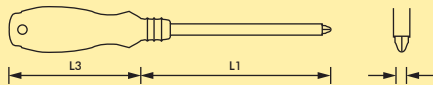


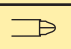
	L1 mm		∅ mm	L3 mm
Ph.0	80		3½	75
Ph.1	100		5	90
Ph.2	120		6	100
Ph.3	150		8	110

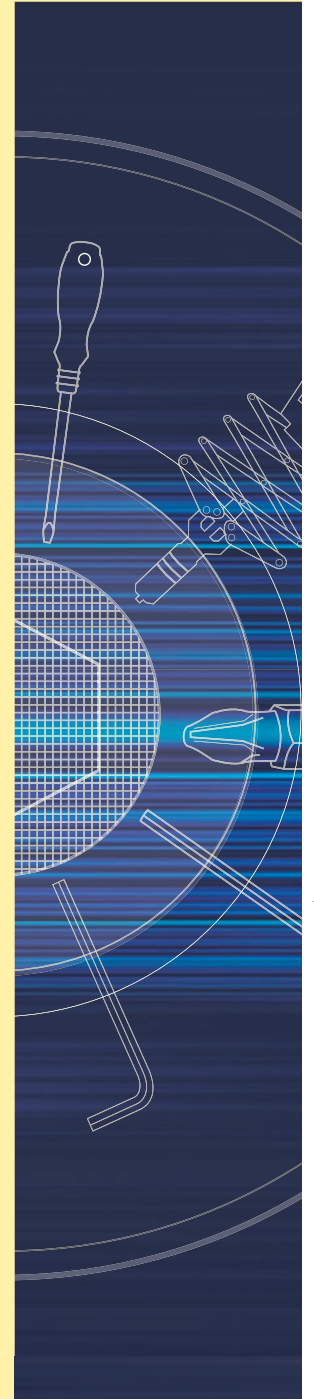


⊕ = 717 MECHANICS SCREWDRIVERS, ISO 8764 (DIN 5262)

SCHROEVENDRAAIERS
SCREWDRIVERS
SCHRAUBENDREHER
TOURNEVIS
DESTORNILLADORES



	L1 mm		∅ mm	L3 mm
Pd.1	100		5	90
Pd.2	120		6	100
Pd.3	150		8	110



Beargrip Tool Mfg. Co.
P.O. Box 6
7963 ZG Ruinen
The Netherlands
T: +31 (0)522 47 17 44
F: +31 (0)522 47 25 17
E: mail@beargrip.nl
I: www.beargrip.com

SCREWDRIVERSETS

SCHROEVENDRAAIERS
SCREWDRIVERS
SCHRAUBENDREHER
TOURNEVIS
DESTORNILLADORES

725 =

710	⊖	4 x 100
		5½ x 125
		6½ x 150
711	⊕	Ph.1
		Ph.2

12

730 =

710	⊖	4 x 100
		5½ x 125
		6½ x 150
717	⊕	Pd.1
		Pd.2

12

BLISTERPACK

Blisterpack for series

2300	1300
2310	1310
2610	2610R
710	711
717	3010

12

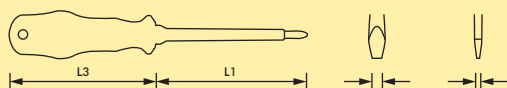




SCHROEVENDRAAIERS
SCREWDRIVERS
SCHRAUBENDREHER
TOURNEVIS
DESTORNILLADORES



⊖ = 714 ELECTRICIENS SCREWDRIVERS, 1000V - EN 60900

GEÏSOLEERDE SCHROEVENDRAAIERS
INSULATED SCREWDRIVERS
ISOLIERTE SCHRAUBENDREHER
TOURNEVIS ISOLÉS
DESTORNILLADORES AISLADOS



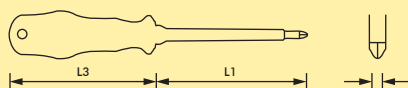
	L1 mm		Ø mm	L3 mm
2½	75	0.4	2½	70
3	100	0.5	3	70
4	100	0.8	4	90
5½	125	1.0	5½	100
6½	150	1.2	6½	100
8	175	1.2	7	110
10	200	1.6	8	110

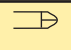


12

⊕ = 716 ELECTRICIENS SCREWDRIVERS, 1000V - EN 60900

GEÏSOLEERDE SCHROEVENDRAAIERS
INSULATED SCREWDRIVERS
ISOLIERTE SCHRAUBENDREHER
TOURNEVIS ISOLÉS
DESTORNILLADORES AISLADOS



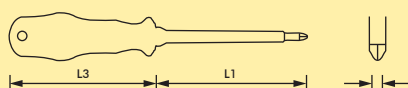
	L1 mm		Ø mm	L3 mm
Ph.0	60		3½	80
Ph.1	80		5	90
Ph.2	100		6	100
Ph.3	150		8	110

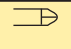


12

⊕ = 721 ELECTRICIENS SCREWDRIVERS, 1000V - EN 60900

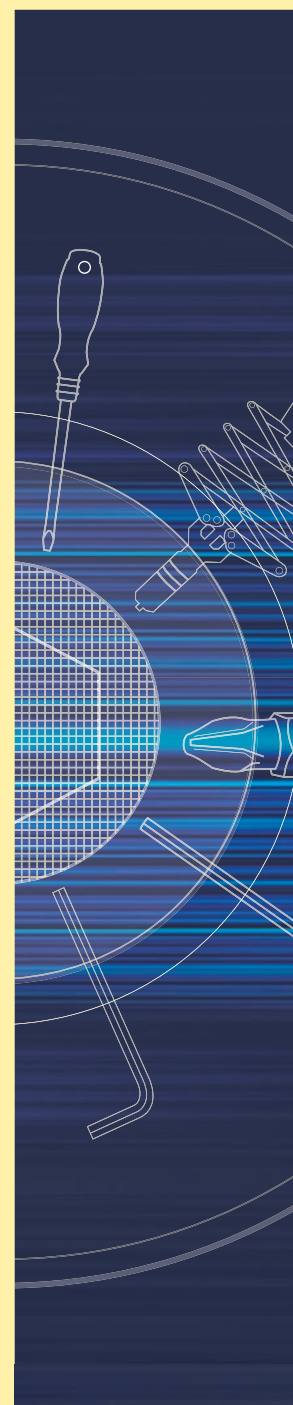
GEÏSOLEERDE SCHROEVENDRAAIERS
INSULATED SCREWDRIVERS
ISOLIERTE SCHRAUBENDREHER
TOURNEVIS ISOLÉS
DESTORNILLADORES AISLADOS



	L1 mm		Ø mm	L3 mm
Pd.0	60		3½	80
Pd.1	80		5	90
Pd.2	100		6	100



12



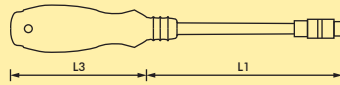
Beargrip Tool Mfg. Co.
P.O. Box 6
7963 ZG Ruinen
The Netherlands

T: +31 (0)522 47 17 44
F: +31 (0)522 47 25 17

E: mail@beargrip.nl
I: www.beargrip.com

3010 1/4" FLEX - BITHOLDER

BITHOUDER, NIET MAGNETISCH
 BITHOLDER, NON MAGNETIC
 BITHALTER, NICHT MAGNETISCH
 PORTE-EMBOUT, NON MAGNÉTIQUE
 ADAPTADOR, NON MAGNÉTICO



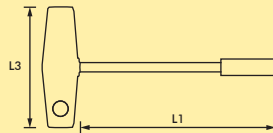
Drive	L1 mm	L3 mm
1/4"	210	110



12

3013 1/4" BITHOLDER

BITHOUDER, MAGNETISCH
 BITHOLDER, MAGNETIC
 BITHALTER, MAGNETISCH
 PORTE-EMBOUT, MAGNÉTIQUE
 ADAPTADOR, MAGNÉTICO



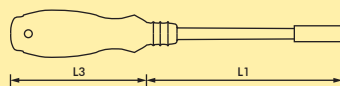
Drive	L1 mm	L3 mm
1/4"	45	90
1/4"	150	90



12

3015 1/4" BITHOLDER

BITHOUDER, MAGNETISCH
 BITHOLDER, MAGNETIC
 BITHALTER, MAGNETISCH
 PORTE-EMBOUT, MAGNÉTIQUE
 ADAPTADOR, MAGNÉTICO



Drive	L1 mm	L3 mm
1/4"	170	110



12

SCHROEVENDRAAIERS
 SCREWDRIVERS
 SCHRAUBENDREHER
 TOURNEVIS
 DESTORNILLADORES



3012 1/4" RATCHET BITHOLDER IN BLISTER

BITHOUDER, MAGNETISCH
 BITHOLDER, MAGNETIC
 BITHALTER, MAGNETISCH
 PORTE-EMBOUT, MAGNÉTIQUE
 ADAPTADOR, MAGNÉTICO

Drive	L1 mm	L3 mm
1/4"	105	125

12



3027 BITBLOCS WITH 1/4" RATCHET BITHOLDER IN BLISTER

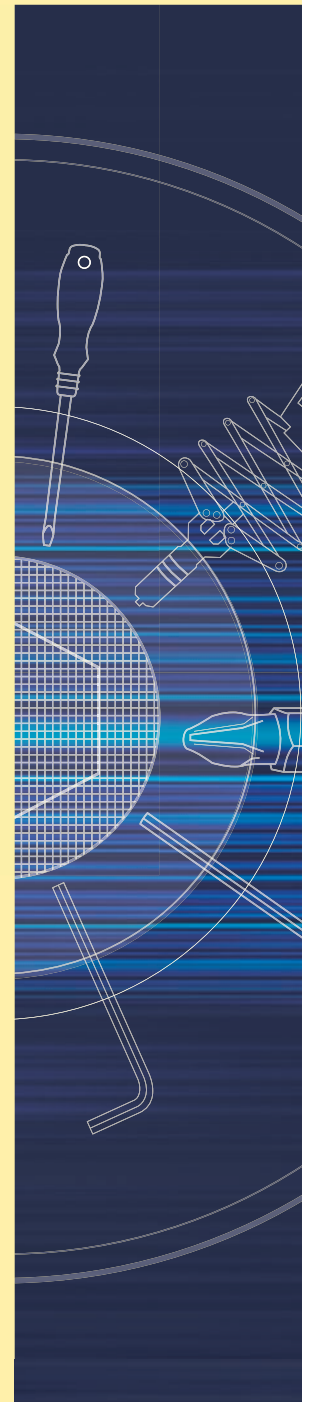
Drive	L1 mm	L3 mm
1/4"	105	125

12



22 Bits

⊖	1 x 3 · 4 · 5 · 6 · 7 · 8
+	1 x Ph.1 · Ph.3 2 x Ph.2
+	1 x Pd.1 · Pd.3 2 x Pd.2
⊙	1 x Tx. 9 · 10 · 15 · 20 · 25 27 · 30 · 40



Beargrip Tool Mfg. Co.
 P.O. Box 6
 7963 ZG Ruinen
 The Netherlands
 T: +31 (0)522 47 17 44
 F: +31 (0)522 47 25 17
 E: mail@beargrip.nl
 I: www.beargrip.com

BITHOLDERS

BITHOUDERS, MAGNETISCH
 BITHOLDERS, MAGNETIC
 BITHALTERS, MAGNETISCH
 PORTE-EMBOUS, MAGNÉTIQUES
 ADAPTADORES, MAGNÉTICOS

3016 1/4" BITHOLDER
 MAGNETIC

LENGTH mm	60 - 75 - 125 - 180
-----------	---------------------



12

IN BLISTER

LENGTH mm	60 - 75
-----------	---------



12

3017 1/4" QUICK CHANGE BITHOLDER
 MAGNETIC

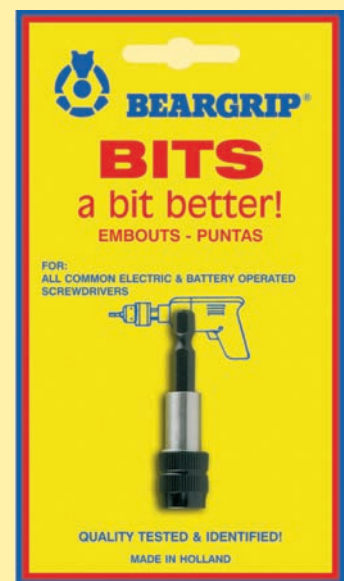
LENGTH mm	60 - 75
-----------	---------



12

IN BLISTER

LENGTH mm	60 - 75
-----------	---------



12

BITS
 EMBOUTS
 PUNTAS



ADAPTERS

ADAPTERS
EMBOUS PORTÉ-DOUILLE
ADAPTADORES

3011 1/4" ADAPTERS

ADAPTERS

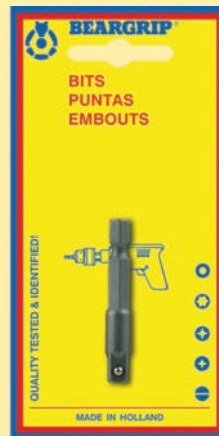
LENGTH mm	25 - 50
-----------	---------



12

IN BLISTER

LENGTH mm	25 - 50
-----------	---------



12

3020 1/4" DEPTH GAUGE

ADAPTERS

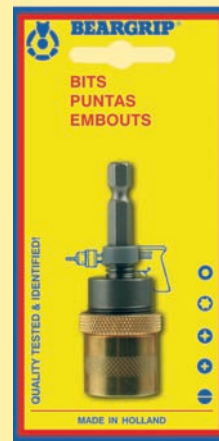
LENGTH mm	70
-----------	----



12

IN BLISTER

LENGTH mm	70
-----------	----



12

4009 1/4" NUTSETTERS, FULLY HARDENED

BITDOPPEN, MAGNETISCH, 55 MM
NUTSETTERS, MAGNETIC, 55 MM
STECKSCHLÜSSEL-EINSÄTZE, MAGNETISCH, 55 MM
DOUILLES, MAGNÉTIQUES, 55 MM
PORTA PUNTAS, MAGNÉTICOS, 55 MM

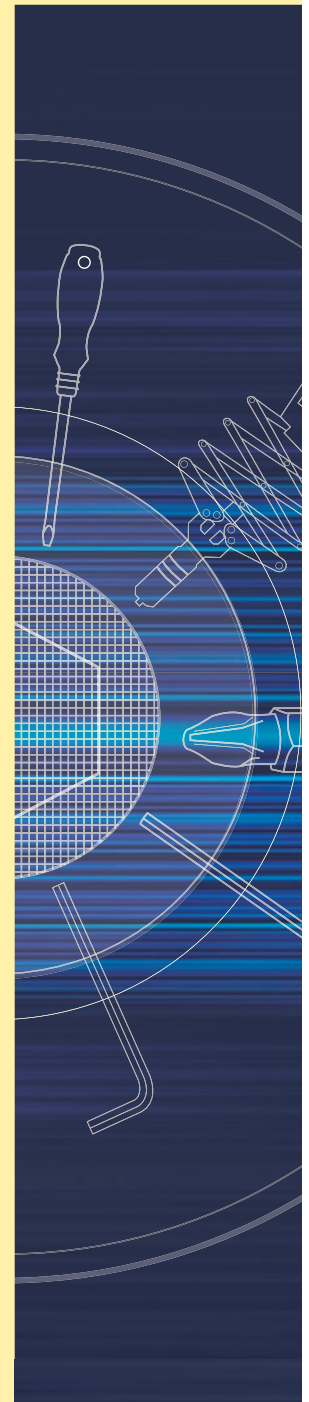
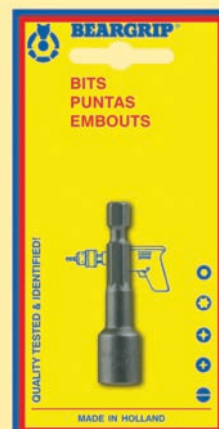
4009

MM	INCH
5	1/4
5½	3/8
6	
7	
8	
9	
10	
11	
12	
13	



5x 10

12



Beargrip Tool Mfg. Co.
P.O. Box 6
7963 ZG Ruinen
The Netherlands
T: +31 (0)522 47 17 44
F: +31 (0)522 47 25 17
E: mail@beargrip.nl
I: www.beargrip.com


BITS

BITS
EMBOUS
PUNTAS

HIGH PERFORMANCE BITS

⊖ = 3001
1/4" DRIVE

25 mm	5x 10
3 x 0.5	
4 x 0.6	
5 x 0.8	
6 x 1	
7 x 1	
8 x 1.2	




⊕ = 3002
1/4" DRIVE

25 mm	5x 10
Ph.0	
Ph.1	
Ph.2	
Ph.3	
Ph.4 32 mm	




⊕ = 3003
1/4" DRIVE

25 mm	5x 10
Pd.1	
Pd.2	
Pd.3	
Pd.4 32 mm	



⊖ = 3004
1/4" DRIVE

25 mm	5x 10
2 1/2	8
3	10
4	
5	
6	
7	




⊖ = 3005
1/4" DRIVE

25 mm	5x 10
No.1	
No.2	
No.3	




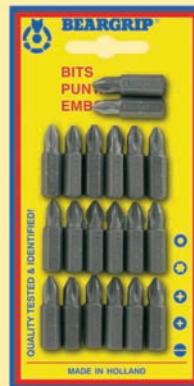
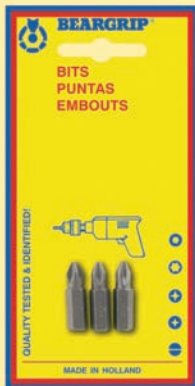
⊕ = 3006
1/4" DRIVE

25 mm	5x 10
8	27
9	30
10	40
15	45
20	50
25	55



⊕ = 3006R
1/4" DRIVE

25 mm	5x 10
9	30
10	40
15	
20	
25	
27	

BITS IN BLISTER

3 PCS. - 20 PCS.

SERIES	3001 - 3002
	3003 - 3004
	3005 - 3006
	3006R - 3002Ti.N
	3003Ti.N
	3002Zr.N
	3003Zr.N

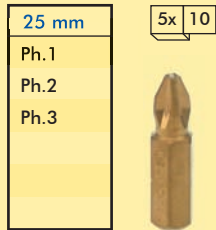
12

BITS
EMBOUS
PUNTAS

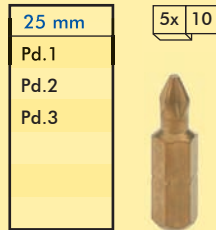
BITS
BITS
EMBOUS
PUNTAS

TITANIUM-NITRIDE (Ti.N) COATED BITS

+ = 3002
1/4" DRIVE

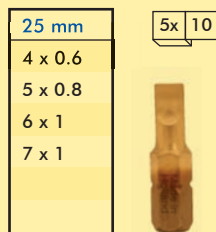


+ = 3003
1/4" DRIVE

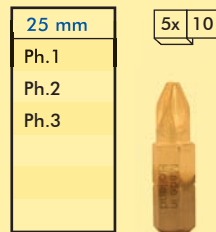


ZIRCONIUM-NITRIDE (Zr.N) COATED BITS

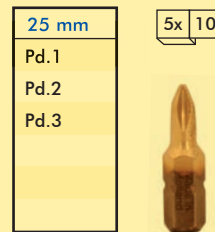
● = 3001
1/4" DRIVE



+ = 3002
1/4" DRIVE

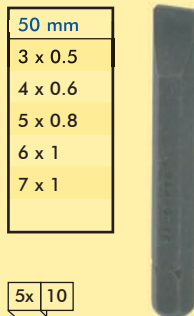


+ = 3003
1/4" DRIVE

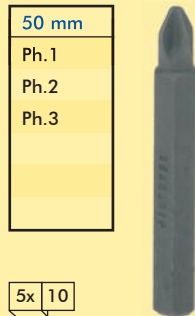


HIGH PERFORMANCE BITS

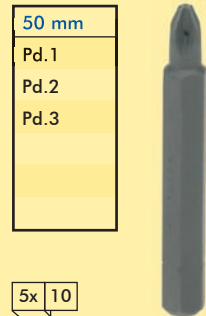
● = 3501
1/4" DRIVE



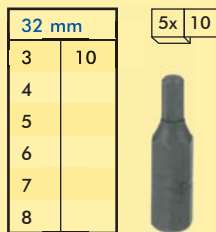
+ = 3502
1/4" DRIVE



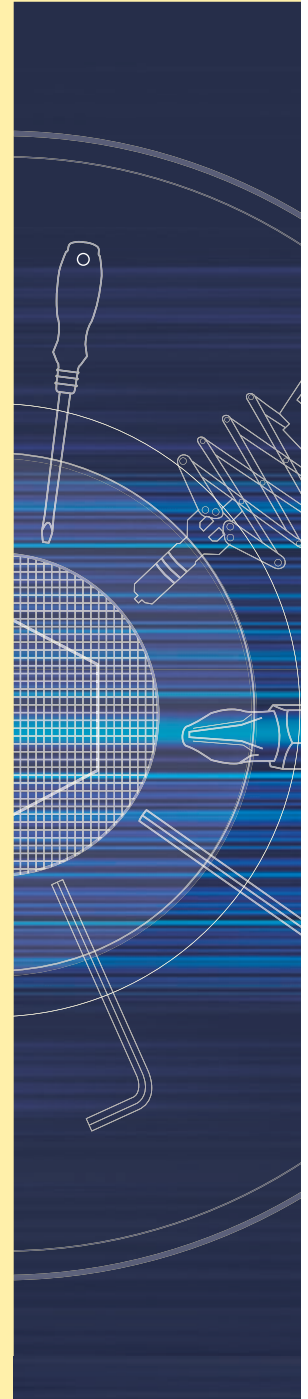
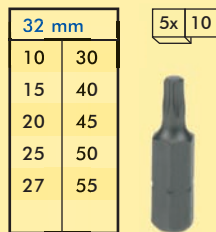
+ = 3503
1/4" DRIVE



○ = 3384
5/16" DRIVE



⊛ = 3386
5/16" DRIVE



Beargrip Tool Mfg. Co.
P.O. Box 6
7963 ZG Ruinen
The Netherlands
T: +31 (0)522 47 17 44
F: +31 (0)522 47 25 17
E: mail@beargrip.nl
I: www.beargrip.com

BITS

BITS
EMBOUS
PUNTAS

**DIRECT DRIVE
FOR ELECTRIC POWERED SCREWDRIVERS**

⊖ = 4001
1/4" DRIVE

50 mm	
3	x 0.5
4	x 0.6
4½	x 0.6
5	x 0.8
5½	x 0.8
6	x 1
7	x 1
8	x 1.2

5x 10



⊕ = 4002
1/4" DRIVE

50 mm	
Ph.0	
Ph.1	
Ph.2	
Ph.3	

5x 10



⊕ = 4003
1/4" DRIVE

50 mm	
Pd.1	
Pd.2	
Pd.3	

5x 10



⊖ = 4004
1/4" DRIVE

50 mm	
2½	8
3	
4	
5	
6	
7	

5x 10



⊖ = 4005
1/4" DRIVE

50 mm	
No.1	
No.2	
No.3	

5x 10



⊕ = 4006
1/4" DRIVE

50 mm	
8	27
9	30
10	40
15	
20	
25	

5x 10



⊕ = 4006R
1/4" DRIVE

50 mm	
8	
9	
10	
15	
20	

5x 10



BITS
EMBOUS
PUNTAS

BITS

BITS
EMBOUS
PUNTAS

DIRECT DRIVE FOR ELECTRIC POWERED SCREWDRIVERS

BITS IN BLISTER

3 PCS - 50 MM

SERIES	4001 - 4002
	4003 - 4004
	4005
	4006 - 4006R

12



⊕ = 4002

1/4" DRIVE

75 mm
Ph.0
Ph.1
Ph.2
Ph.3



100 mm
Ph.0
Ph.1
Ph.2
Ph.3

5x 10

⊕ = 4003

1/4" DRIVE

75 mm
Pd.1
Pd.2
Pd.3



100 mm
Pd.1
Pd.2
Pd.3

5x 10

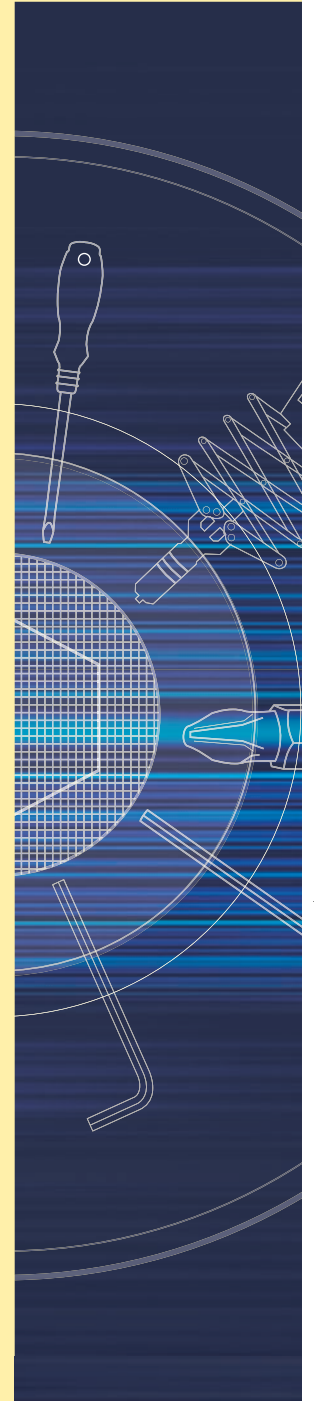
HIGH PERFORMANCE BITS

STORAGE BOX

1/4" DRIVE - 25 MM

500	⊖	50 pcs. x 4 - 5 - 6 - 7
	⊕	100 pcs. x Ph.1 - Ph.2
	⊕	50 pcs. x Pd.1 - Pd.2
		10 pcs. x bitholders 3016-60 mm

Total: 500 Bits + 10 Bitholders 3016-60 mm



Beargrip Tool Mfg. Co.
P.O. Box 6
7963 ZG Ruinen
The Netherlands

T: +31 (0)522 47 17 44
F: +31 (0)522 47 25 17

E: mail@beargrip.nl
I: www.beargrip.com

BITS

BITS
EMBOUTS
PUNTAS

ClipPac BITSET WITH BITHOLDER 3016-60 MM

3043 7	<ul style="list-style-type: none"> 5 - 7 Ph.1 - 2 Pd.1 - 2 bitholder 3016-60 mm
3044 7	<ul style="list-style-type: none"> Ph.1 - 2 - 3 Pd.1 - 2 - 3 bitholder 3016-60 mm
3045 7	<ul style="list-style-type: none"> 2½ - 3 - 4 - 5 - 6 - 8 bitholder 3016-60 mm
3046 7	<ul style="list-style-type: none"> Tx. 10 - 15 - 20 - 25 - 30 - 40 bitholder 3016-60 mm
3047 7	<ul style="list-style-type: none"> Tx.R 10 - 15 - 20 - 25 - 30 - 40 bitholder 3016-60 mm

3043 11	<ul style="list-style-type: none"> 4 - 5 - 6 - 7 Ph.1 - 2 - 3 Pd.1 - 2 - 3 bitholder 3016-60 mm
---------	----------------------------------------------------------------------------------------------------------------------------------

3046 11	<ul style="list-style-type: none"> 1x Tx. 9 - 10 - 15 - 40 2x Tx. 20 - 25 - 30 bitholder 3016-60 mm
---------	-----------------------------------------------------------------------------------------------------------------------------

3047 11	<ul style="list-style-type: none"> 1x Tx.R 9 - 10 - 15 - 40 2x Tx.R 20 - 25 - 30 bitholder 3016-60 mm
---------	-------------------------------------------------------------------------------------------------------------------------------



**ClipPac BITSET WITH BITHOLDER 3016-60 MM
TITANIUM-NITRIDE (Ti.n) COATED BITS**

3044 7 Ti.N	<ul style="list-style-type: none"> Ph.1 - 2 - 3 Pd.1 - 2 - 3 bitholder 3016-60 mm
3048 11 Ti.N	<ul style="list-style-type: none"> 10 x Ph.2 bitholder 3016-60 mm
3049 11 Ti.N	<ul style="list-style-type: none"> 10 x Pd.2 bitholder 3016-60 mm



**ClipPac BITSET WITH BITHOLDER 3016-60 MM
ZIRCONIUM-NITRIDE (Zr.n) COATED BITS**

3043 7 Zr.N	<ul style="list-style-type: none"> 5 - 7 Ph.1 - 2 Pd.1 - 2 bitholder 3016-60 mm
3044 7 Zr.N	<ul style="list-style-type: none"> Ph.1 - 2 - 3 Pd.1 - 2 - 3 bitholder 3016-60 mm
3043 11 Zr.N	<ul style="list-style-type: none"> 4 - 5 - 6 - 7 Ph.1 - 2 - 3 Pd.1 - 2 - 3 bitholder 3016-60 mm



ClipPac
• WITH BELT CLIP
• SOFT GRIP



BITS
EMBOUTS
PUNTAS








BITS

BITS
EMBOUS
PUNTAS









SET IN BLISTER 1/4" DRIVE - 25 MM

12

3041		5 - 7
		Ph.1 - 2
		Pd.1 - 2
	bitholder 3016-60 mm	
3042		Tx.15 - 20 - 25 - 27 - 30 - 40 bitholder 3016-60 mm
3042R		Tx.R 15 - 20 - 25 - 27 - 30 - 40 bitholder 3016-60 mm





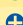

SET IN BLISTER 1/4" DRIVE - 25 MM

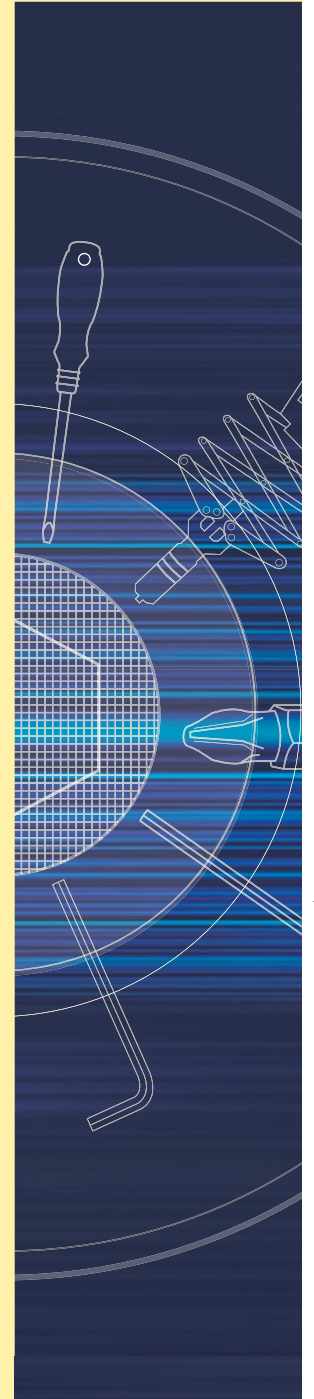
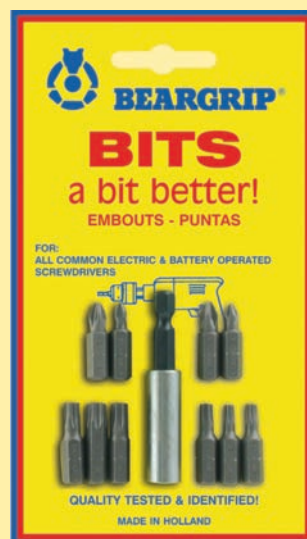
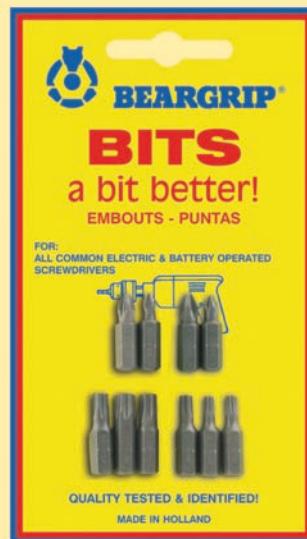
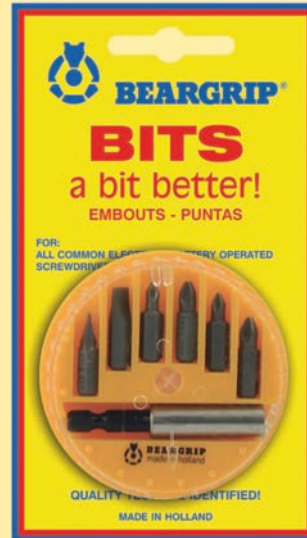
12

3060		Ph.1 - 2
		Pd.1 - 2
		Tx.15 - 20 - 25 - 27 - 30 - 40
3061		4 - 5 - 6 - 7
		Ph.1 - 2 - 3
		Pd.1 - 2 - 3
3062		5 x Ph.2
		5 x Pd.2

SET IN BLISTER 1/4" DRIVE - 25 MM

12

3065		Ph.1 - 2
		Pd.1 - 2
		Tx.15 - 20 - 25 - 27 - 30 - 40 bitholder 3016-60 mm
3066		4 - 5 - 6 - 7
		Ph.1 - 2 - 3
		Pd.1 - 2 - 3
	bitholder 3016-60 mm	



Beargrip Tool Mfg. Co.
P.O. Box 6
7963 ZG Ruinen
The Netherlands
T: +31 (0)522 47 17 44
F: +31 (0)522 47 25 17
E: mail@beargrip.nl
I: www.beargrip.com

BITBLOC SYSTEM 1/4" DRIVE - 25 MM

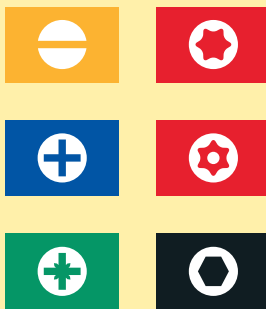
Een fantastische verkoop-hulp: veel bits op een klein oppervlak. De kleurcodering vergemakkelijkt het selecteren van de juiste bit.

A practical and useful sales aid on the counter. The colourful presentation attracts everybody's attention and eases selection.

Eine erstklassige Verkaufshilfe zum Aufstellen auf der Theke. Die Farbkodierung - jede Bitsorte in einer bestimmten Farbe Bitblock - erleichtert die Auswahl

Une excellente aide à la vente. Idéale sur le comptoir ou accroché à une gondole. Permet de rentabiliser au maximum le linéaire. Identification par couleurs.

Un fantástico medio de promoción. Muchas puntas en una pequeña superficie. La codificación en colores facilita la selección del tipo de punta adecuado. Identificación por colores.



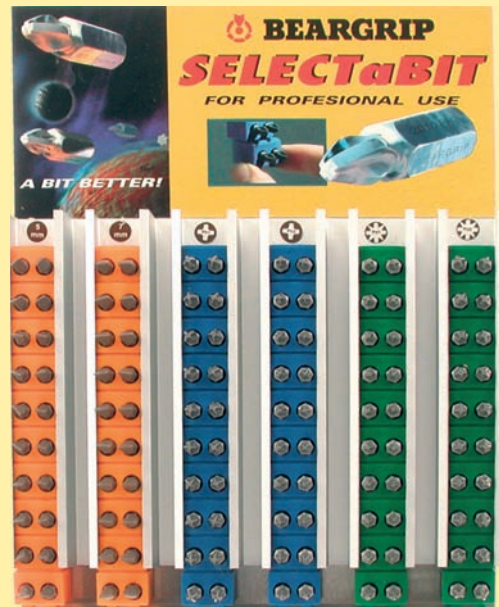
BITS
EMBOUS
PUNTAS



3030 THE BEARGRIP DISPENSER 1/4" DRIVE - 25 MM

- 20 pcs. 5 - 7
- 20 pcs. Ph.1 - 2
- 20 pcs. Pd.1 - 2

Any other composition of 120 bits possible.



3095 THE BEARGRIP MERRY-GO-ROUND 1/4" DRIVE - 25 MM

- 20 pcs. 5 - 7
- 20 pcs. Ph.0 - 1 - 2 - 3
- 20 pcs. Pd.1 - 2 - 3
- 20 pcs. Tx. 8 - 9 - 10 - 15 - 20 - 25 - 27 - 30 - 40

Any other composition of 360 bits possible.



802 RIVETING PLIER

BLINDKLINKTANG MET SLEUTEL EN VEER
RIVETING PLIER WITH WRENCH AND SPRING
BLINDNIETZANGE MIT SCHLÜSSEL UND FEDER
PINCE À RIVETER AVEC CLEFS ET RESSORT
REMACHADORA CON LLAVE Y RESORTE



3 SPANKLAUWEN
3 JAWS
3 BACKEN
3 MÂCHOIRES
3 MORDAZAS

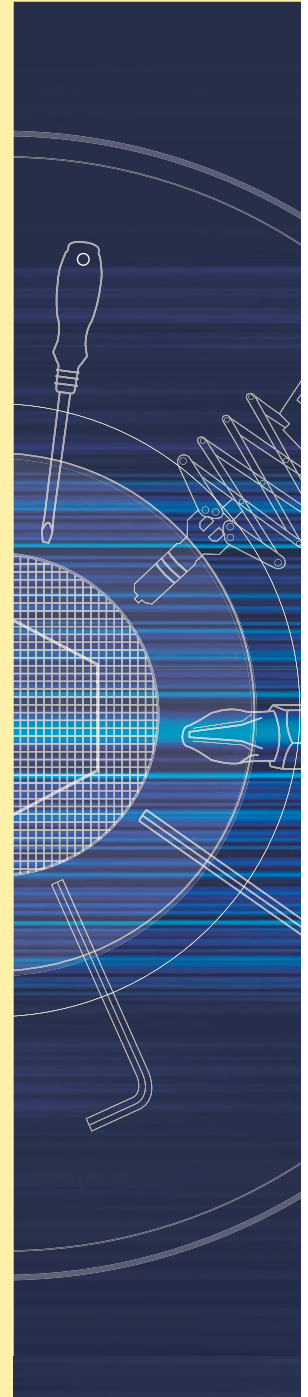
Voor aluminium nieten 3 - 4 - 5 mm
en staal 2,4 - 3 - 4 mm.

For aluminium rivets 3 - 4 - 5 mm
and steel 2,4 - 3 - 4 mm.

Für Aluminium Nieten 3 - 4 - 5 mm
und Stahl 2,4 - 3 - 4 mm.

Pour rivets en aluminium 3 - 4 - 5 mm
et en acier 2,4 - 3 - 4 mm.

Por remaches en aluminio 3 - 4 - 5 mm
y acero 2,4 - 3 - 4 mm.



Beargrip Tool Mfg. Co.
P.O. Box 6
7963 ZG Ruinen
The Netherlands
T: +31 (0)522 47 17 44
F: +31 (0)522 47 25 17
E: mail@beargrip.nl
I: www.beargrip.com

810 COMPACT - RIVETING PLIER

BLINDKLINKTANG MET SLEUTEL EN VEER
RIVETING PLIER WITH WRENCH AND SPRING
BLINDNIETZANGE MIT SCHLÜSSEL UND FEDER
PINCE À RIVETER AVEC CLEFS ET RESSORT
REMACHADORA CON LLAVE Y RESORTE



3 SPANKLAUWEN
3 JAWS
3 BACKEN
3 MÂCHOIRES
3 MORDAZAS

Voor aluminium nieten 2,4 - 3 - 4 mm
en staal 2,4 - 3 mm.

For aluminium rivets 2,4 - 3 - 4 mm
and steel 2,4 - 3 mm.

Für Aluminium Nieten 2,4 - 3 - 4 mm
und Stahl 2,4 - 3 mm.

Pour rivets en aluminium 2,4 - 3 - 4 mm
et en acier 2,4 - 3 mm.

Por remaches en aluminio 2,4 - 3 - 4 mm
y acero 2,4 - 3 mm.



810-0 COMPACT - RIVETING PLIER

BLINDKLINKTANG ZONDER SLEUTEL EN VEER
RIVETING PLIER WITHOUT WRENCH AND SPRING
BLINDNIETZANGE OHNE SCHLÜSSEL UND FEDER
PINCE À RIVETER SANS CLEFS ET RESSORT
REMACHADORA SIN LLAVE Y RESORTE



3 SPANKLAUWEN
3 JAWS
3 BACKEN
3 MÂCHOIRES
3 MORDAZAS

Voor aluminium nieten 2,4 - 3 - 4 mm
en staal 2,4 - 3 mm.

For aluminium rivets 2,4 - 3 - 4 mm
and steel 2,4 - 3 mm.

Für Aluminium Nieten 2,4 - 3 - 4 mm
und Stahl 2,4 - 3 mm.

Pour rivets en aluminium 2,4 - 3 - 4 mm
et en acier 2,4 - 3 mm.

Por remaches en aluminio 2,4 - 3 - 4 mm
y acero 2,4 - 3 mm.



BLINDKLINKTANGEN
RIVETING PLIERS
BLINDNIETZANGEN
PINCES À RIVETER
REMACHADORAS



812 CHALLENGER - RIVETING PLIER



BLINDKLINKTANG MET SLEUTEL EN VEER
 RIVETING PLIER WITH WRENCH AND SPRING
 BLINDNIETZANGE MIT SCHLÜSSEL UND FEDER
 PINCE À RIVETER AVEC CLEFS ET RESSORT
 REMACHADORA CON LLAVE Y RESORTE



3 SPANKLAUWEN
 3 JAWS
 3 BACKEN
 3 MÂCHOIRES
 3 MORDAZAS

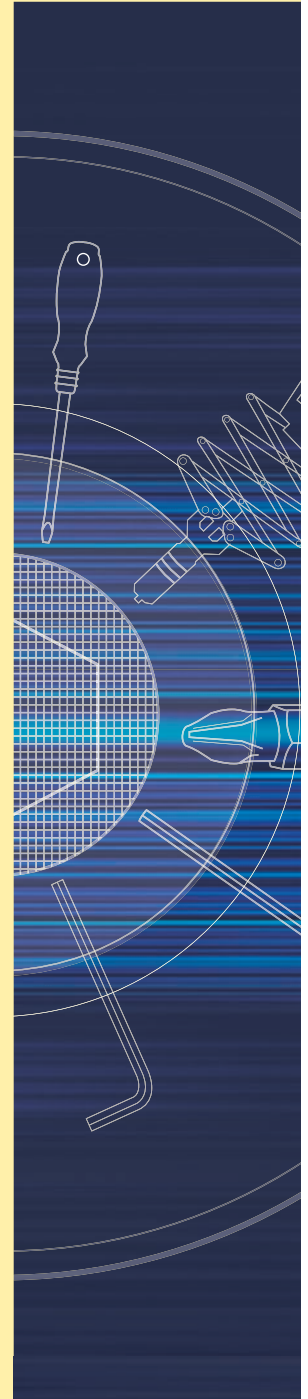
Voor aluminium nieten 2,4 - 3 - 4 - 5 mm
 en staal 2,4 - 3 - 4 mm.

For aluminium rivets 2,4 - 3 - 4 - 5 mm
 and steel 2,4 - 3 - 4 mm.

Für Aluminium Nieten 2,4 - 3 - 4 - 5 mm
 und Stahl 2,4 - 3 - 4 mm.

Pour rivets en aluminium 2,4 - 3 - 4 - 5 mm
 et en acier 2,4 - 3 - 4 mm.

Por remaches en aluminio 2,4 - 3 - 4 - 5 mm
 y acero 2,4 - 3 - 4 mm.



STYLE WITH STRENGTH

Beargrip Tool Mfg. Co.
 P.O. Box 6
 7963 ZG Ruinen
 The Netherlands
 T: +31 (0)522 47 17 44
 F: +31 (0)522 47 25 17
 E: mail@beargrip.nl
 I: www.beargrip.com



INDUSTRIE
 FORUM
 DESIGN
 HANNOVER

AWARD FOR GOOD
 INDUSTRIAL
 DESIGN
 HANNOVER

AUSZEICHNUNG
 FÜR GUTES
 DESIGN
 HANNOVER

PREMIO
 DESIGN
 INDUSTRIALE
 HANNOVER

PRIMÉ PAR LE
 INDUSTRY FORUM
 DESIGN
 HANNOVER

812 LN CHALLENGER - RIVETING PLIER LONGNOSE FOR DEEP RIVETING



industrial
design award
HANNOVER

BLINDKLINKTANG MET SLEUTEL EN VEER
RIVETING PLIER WITH WRENCH AND SPRING
BLINDNIETZANGE MIT SCHLÜSSEL UND FEDER
PINCE À RIVETER AVEC CLEFS ET RESSORT
REMACHADORA CON LLAVE Y RESORTE



3 SPANKLAUWEN
3 JAWS
3 BACKEN
3 MÂCHOIRES
3 MORDAZAS

Voor aluminium nieten 2,4 - 3 - 4 - 5 mm
en staal 2,4 - 3 - 4 mm.

For aluminium rivets 2,4 - 3 - 4 - 5 mm
and steel 2,4 - 3 - 4 mm.

Für Aluminium Nieten 2,4 - 3 - 4 - 5 mm
und Stahl 2,4 - 3 - 4 mm.

Pour rivets en aluminium 2,4 - 3 - 4 - 5 mm
et en acier 2,4 - 3 - 4 mm.

Por remaches en aluminio 2,4 - 3 - 4 - 5 mm
y acero 2,4 - 3 - 4 mm.



BLINDKLINKTANGEN
RIVETING PLIERS
BLINDNIETZANGEN
PINCES À RIVETER
REMACHADORAS



STYLE WITH STRENGTH



INDUSTRIE
FORUM
DESIGN
HANNOVER

AWARD FOR GOOD
INDUSTRIAL
DESIGN
HANNOVER

AUSZEICHNUNG
FÜR GUTES
DESIGN
HANNOVER

PREMIO
DESIGN
INDUSTRIALE
HANNOVER

PRIMÉ PAR LE
INDUSTRY FORUM
DESIGN
HANNOVER

822 RIVETING PLIER SET

BLINDKLINKTANG 802 MET SLEUTEL EN VEER
 RIVETING PLIER 802 WITH WRENCH AND SPRING
 BLINDNIETZANGE 802 MIT SCHLÜSSEL UND FEDER
 PINCE À RIVET 802 AVEC CLEFS ET RESSORT
 REMACHADORA 802 CON LLAVE Y RESORTE



3 SPANKLAUWEN
 3 JAWS
 3 BACKEN
 3 MÂCHOIRES
 3 MORDAZAS

WITH	25 RIVETS	2,9 x 6
	25 RIVETS	3.8 x 6
	20 RIVETS	3.8 x 10



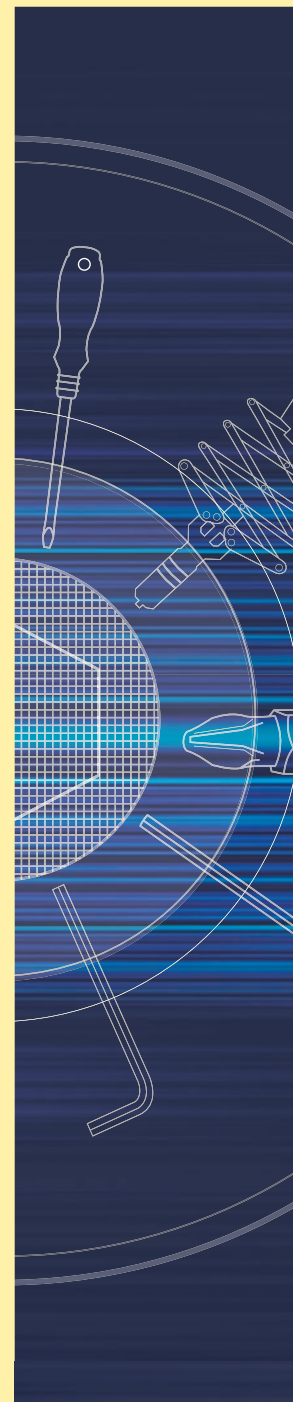
832 RIVETING PLIER SET

BLINDKLINKTANG 812 MET SLEUTEL EN VEER
 RIVETING PLIER 812 WITH WRENCH AND SPRING
 BLINDNIETZANGE 812 MIT SCHLÜSSEL UND FEDER
 PINCE À RIVET 812 AVEC CLEFS ET RESSORT
 REMACHADORA 812 CON LLAVE Y RESORTE



3 SPANKLAUWEN
 3 JAWS
 3 BACKEN
 3 MÂCHOIRES
 3 MORDAZAS

WITH	25 RIVETS	2,9 x 6
	25 RIVETS	3.8 x 6
	20 RIVETS	3.8 x 10



Beargrip Tool Mfg. Co.
 P.O. Box 6
 7963 ZG Ruinen
 The Netherlands

T: +31 (0)522 47 17 44
 F: +31 (0)522 47 25 17

E: mail@beargrip.nl
 I: www.beargrip.com

814 THREADED INSERT PLIER, M4 - M5 - M6

KLINKMOERTANG
 THREADED INSERT PLIER
 EINNIETMUTTERZANGE
 PINCE POUR ÉCROUS AVEUGLES
 REMACHADORA DE TUERCAS

Voor alle blindklinkmoeren in aluminium t/m 6 mm
 en staal t/m 5 mm.

For all threaded inserts in aluminium up to 6 mm
 and steel up to 5 mm.

Für Aluminium Einnietmutter in Aluminium bis einschl. 6 mm
 und Stahl bis einschl. 5 mm.

Pour tout écrous aveugles en aluminium jusqu'à 6 mm
 et en acier 5 mm.

Para todos las tuercas remachables en aluminio hasta 6 mm
 y en acero hasta 5 mm.



834 THREADED INSERT PLIERSET

TANG 814 MET BLINDKLINKMOEREN
 PLIER 814 WITH THREADED INSERTS
 ZANGE 814 MIT BLIND-EINNIETMÜTTERN
 PINCE 814 AVEC ÉCROUS AVEUGLES
 REMACHADORA 814 CON TUERCAS REMACHABLES

WITH	25 THREADED INSERTS M4
	20 THREADED INSERTS M5
	20 THREADED INSERTS M6



BLINDKLINKTANGEN
 RIVETING PLIERS
 BLINDNIETZANGEN
 PINCES À RIVETER
 REMACHADORAS

805 STD RIVETING PLIER STANDARD

BLINDKLINKTANG MET SLEUTEL
RIVETING PLIER WITH WRENCH
BLINDNIETZANGE MIT SCHLÜSSEL
PINCE À RIVETER AVEC CLEFS
REMACHADORA CON LLAVE



3 SPANKLAUWEN
3 JAWS
3 BACKEN
3 MÂCHOIRES
3 MORDAZAS

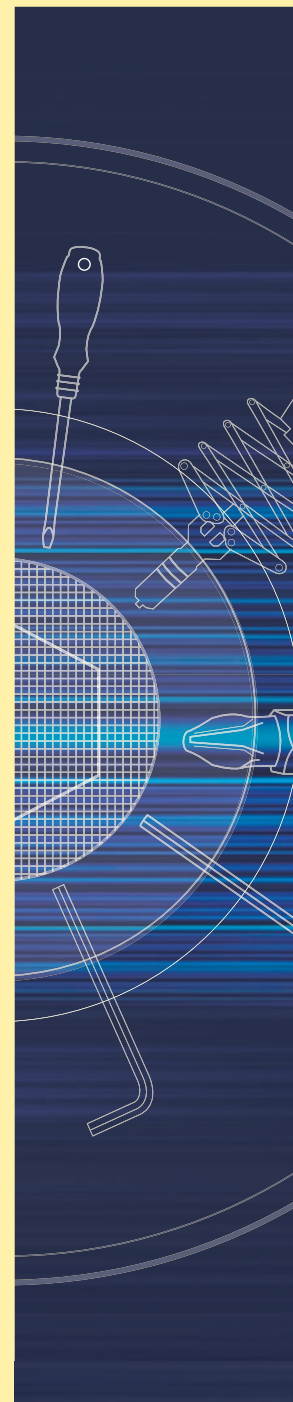
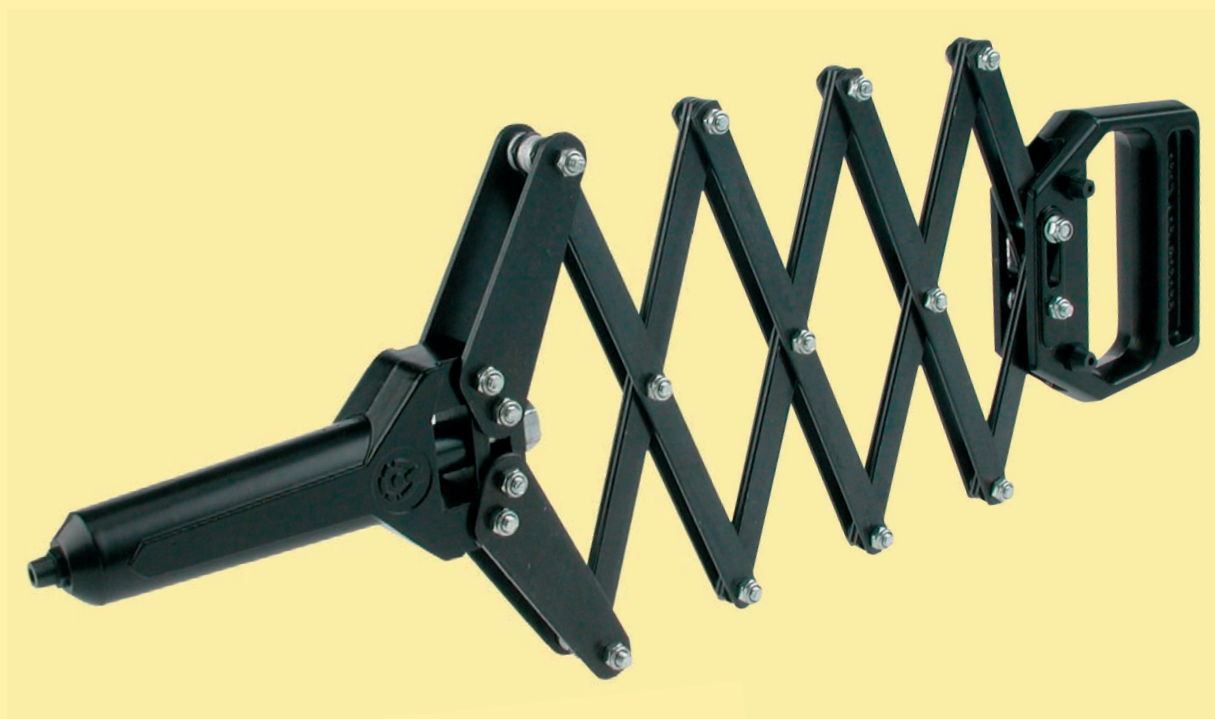
Voor aluminium nieten 2,4 - 3 - 4 - 5 - 6 mm
en staal 2,4 - 3 - 4 - 5 mm.

For aluminium rivets 2,4 - 3 - 4 - 5 - 6 mm
and steel 2,4 - 3 - 4 - 5 mm.

Für Aluminium Nieten 2,4 - 3 - 4 - 5 - 6 mm
und Stahl 2,4 - 3 - 4 - 5 mm.

Pour rivets en aluminium 2,4 - 3 - 4 - 5 - 6 mm
et en acier 2,4 - 3 - 4 - 5 mm.

Por remaches en aluminio 2,4 - 3 - 4 - 5 - 6 mm
y acero 2,4 - 3 - 4 - 5 mm.



Beargrip Tool Mfg. Co.
P.O. Box 6
7963 ZG Ruinen
The Netherlands

T: +31 (0)522 47 17 44
F: +31 (0)522 47 25 17

E: mail@beargrip.nl
I: www.beargrip.com

805 AC RIVETING PLIER

BLINDKLINKTANG MET SLEUTEL
 RIVETING PLIER WITH WRENCH
 BLINDNIETZANGE MIT SCHLÜSSEL
 PINCE À RIVETER AVEC CLEFS
 REMACHADORA CON LLAVE



3 SPANKLAUWEN
 3 JAWS
 3 BACKEN
 3 MÂCHOIRES
 3 MORDAZAS

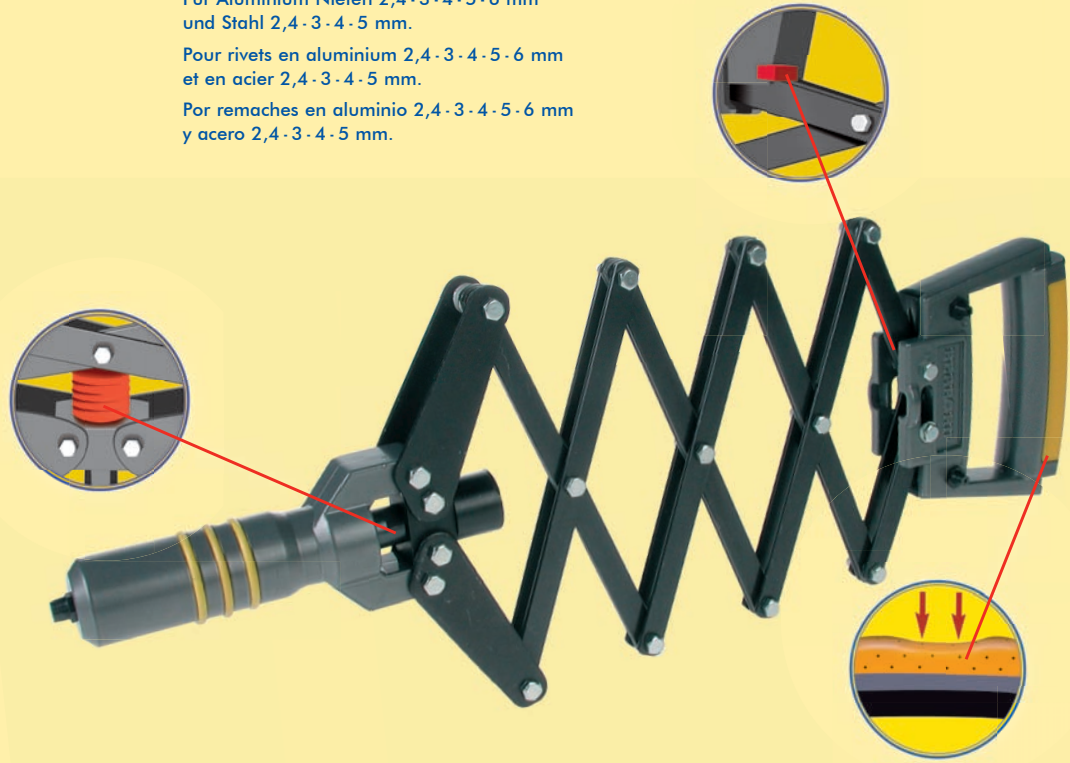
Voor aluminium nieten 2,4 - 3 - 4 - 5 - 6 mm
 en staal 2,4 - 3 - 4 - 5 mm.

For aluminium rivets 2,4 - 3 - 4 - 5 - 6 mm
 and steel 2,4 - 3 - 4 - 5 mm.

Für Aluminium Nieten 2,4 - 3 - 4 - 5 - 6 mm
 und Stahl 2,4 - 3 - 4 - 5 mm.

Pour rivets en aluminium 2,4 - 3 - 4 - 5 - 6 mm
 et en acier 2,4 - 3 - 4 - 5 mm.

Por remaches en aluminio 2,4 - 3 - 4 - 5 - 6 mm
 y acero 2,4 - 3 - 4 - 5 mm.



ANTI-CHOC

De ANTI-CHOC blindklinktang combineert een fraai design aan een ergonomische constructie. De ingebouwde schokdempers maken het werken beduidend aangenamer. Minder vermoeiend en vooral minder belasting van pols, arm en schouder.

The ANTI-CHOC has been designed to reduce fatigue and strain. It has patented built-in shock absorbers, which makes it easier to use, but more important it also reduces fatigue and strain to the wrist, arm and shoulder movement.

Die ANTI-CHOC Blindnietzange kombiniert ein gutes Design mit günstigen Eigenschaften. Die eingebauten Stoßdämpfer erleichtern das arbeiten bedeutend. Weniger Ermüdung, weniger Belastung des Pulses, der Arme und der Schulter.

La pince ANTI-CHOC riveter associe design et ergonomie. Le système d'amortisseur dont est dotée facilite et réduit la fatigue et la tension musculaire.

La remachadora ANTI-CHOC combina una perfecta construcción con un diseño ergonómico. Los amortiguadores montado facilitan utilización obteniendo mayor rendimiento, lo que equivale a menor fatiga y sobre todo menor tension en muñeca, brazo, codo y hombro.



INTERNATIONAL PATENTS
 Nr. 2 - 297 - 283 etc.

BLINDKLINKTANGEN
 RIVETING PLIERS
 BLINDNIETZANGEN
 PINCES À RIVETER
 REMACHADORAS



815 AC RIVETING PLIER

BLINDKLINKTANG MET SLEUTEL
RIVETING PLIER WITH WRENCH
BLINDNIETZANGE MIT SCHLÜSSEL
PINCE À RIVETER AVEC CLEFS
REMACHADORA CON LLAVE



3 SPANKLAUWEN
3 JAWS
3 BACKEN
3 MÂCHOIRES
3 MORDAZAS

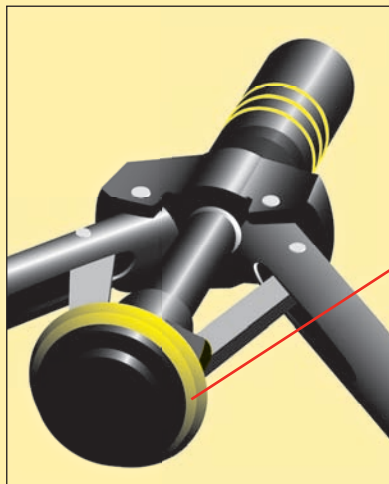
Voor aluminium nieten 3 - 4 - 5 - 6 mm
en staal 2,4 - 3 - 4 - 5 mm.

For aluminium rivets 3 - 4 - 5 - 6 mm
and steel 2,4 - 3 - 4 - 5 mm.

Für Aluminium Nieten 3 - 4 - 5 - 6 mm
und Stahl 2,4 - 3 - 4 - 5 mm.

Pour rivets en aluminium 3 - 4 - 5 - 6 mm
et en acier 2,4 - 3 - 4 - 5 mm.

Por remaches en aluminio 3 - 4 - 5 - 6 mm
y acero 2,4 - 3 - 4 - 5 mm.



ANTI-CHOC

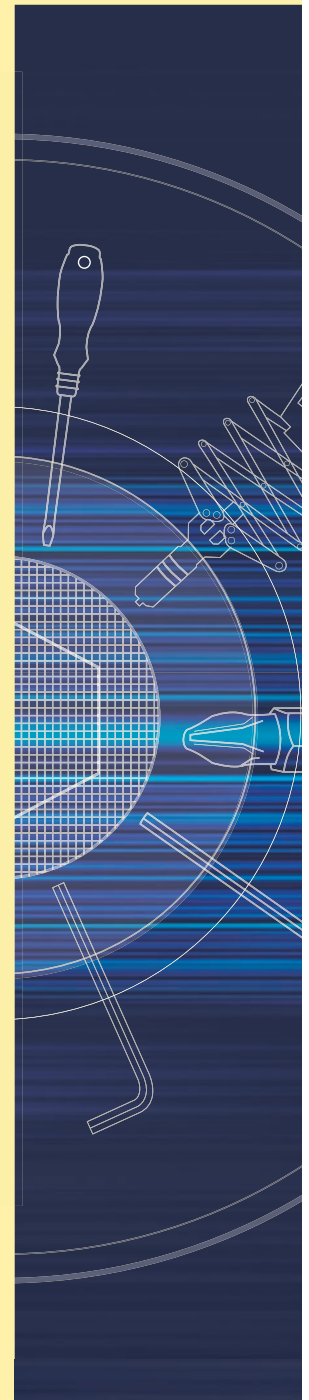
De ANTI-CHOC blindklinktang combineert een fraai design aan een ergonomische constructie. De ingebouwde schokdempers maken het werken beduidend aangenamer. Minder vermoeiend en vooral minder belasting van pols, arm en schouder.

The ANTI-CHOC has been designed to reduce fatigue and strain. It has built-in shock absorbers, which makes it easier to use, but more important it also reduces fatigue and strain to the wrist, arm and shoulder movement.

Die ANTI-CHOC Blindnietzange kombiniert ein gutes Design mit günstigen Eigenschaften. Die eingebauten Stoßdämpfer erleichtern das arbeiten bedeutend. Weniger Ermüdung, weniger Belastung des Puls, der Arme und der Schulter.

La pince ANTI-CHOC riveter associe design et ergonomie. Le système d'amortisseur dont est dotée facilite et réduit la fatigue et la tension musculaire.

La remachadora ANTI-CHOC combina una perfecta construcción con un diseño ergonómico. Los amortiguadores montado facilitan utilización obteniendo mayor rendimiento, lo que equivale a menor fatiga y sobre todo menor tension en muñeca, brazo, codo y hombro.



Beargrip Tool Mfg. Co.
P.O. Box 6
7963 ZG Ruinen
The Netherlands

T: +31 (0)522 47 17 44

F: +31 (0)522 47 25 17

E: mail@beargrip.nl

I: www.beargrip.com

BLINDRIVETS

BLINDNIETEN MET UNIEKE KLEURCODERING VOOR BLINDNIETEN
 BLINDRIVETS WITH UNIQUE COLOUR-CODIFICATION FOR BLINDRIVETS
 BLINDNIETEN MIT EINMALIGEM FARBENLEITSYSTEM FÜR BLINDNIETEN
 RIVETS AVEUGLES CODIFICATION UNIQUE DES RIVETS AVEUGLES
 REMACHES CODIFICACIÓN ÚNICO DE COLORES REMACHES



Ø	L2	K3
2.9	short	6 mm - 1/4"
	medium	9 mm - 3/8"
	long	12 mm - 1/2"

Ø	L2	K3
3.15 - 1/8"	short	6 mm - 1/4"
	medium	9 mm - 3/8"
	long	12 mm - 1/2"

Ø	L2	K3
3.8 - 5/32"	short	6 mm - 1/4"
	medium	10 mm - 3/8"
	long	12 mm - 1/2"

Ø	L2	K3
4.8 - 3/16"	short	6 mm - 1/4"
	medium	10 mm - 3/8"
	long	12 mm - 1/2"

also per 1,000 pcs. 15

DAT IS GEMAKKELIJK!

Dankzij de unieke kleurcodering van de Beargrip blindnieten en mondstukken altijd de juiste blindniet in het juiste mondstuk. U grijpt nooit meer mis!

THAT'S EASY!

Thanks to the unique colour-coding of the Beargrip rivets you can't go wrong. Even if your rivets are strewn all around your toolbox there's no missing about trying to find the right rivet for the right nozzle.

DAS IST PRAKTISCH!

Dank der abgestimmten Farbkodierung der Beargrip Blindnieten und Mundstücke, greifen Sie nie mehr zur falschen Niete. Einfach die Blindniete mit der gleichen Farbe des Mundstückes nehmen.

PLUS D'ERREUR POSSIBLE!

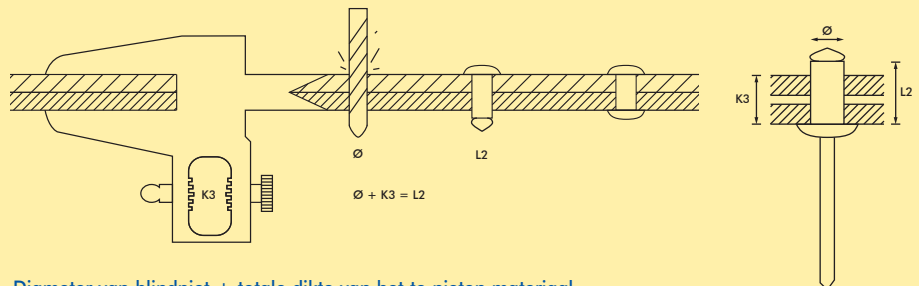
En effet, plus aucune erreur n'est désormais possible grâce au nouveau système de visualisation par la couleur des rivets aveugles Beargrip. Enfoncez le rivet dans le mandrin ayant la couleur.

MAXIMA FACILIDAD!

Gracias al sistema de remache con codificación de colores Beargrip se evitan las equivocaciones. Basta con colocar el remache en la boquilla del mismo color.

NIETLENGTE · RIVETLENGTH · NIETLÄNGE · LONGEUR DU RIVET · LONGITUD DE REMACHE

ZO EENVOUDIG IS HET OM DE JUISTE NIETLENGTE TE BEPALEN.
 SO EASY TO FIND THE CORRECT RIVETLENGTH.
 SO EINFACH IST ES DIE RICHTIGE NIETLÄNGE ZU WÄHLEN.
 SI SIMPLE À TROUVER LA LONGUEUR JUSTE DU RIVET.
 EL ASÍ DE FÁCIL ES DETERMINAR LA LONGITUD EXACTA DEL REMACHE.

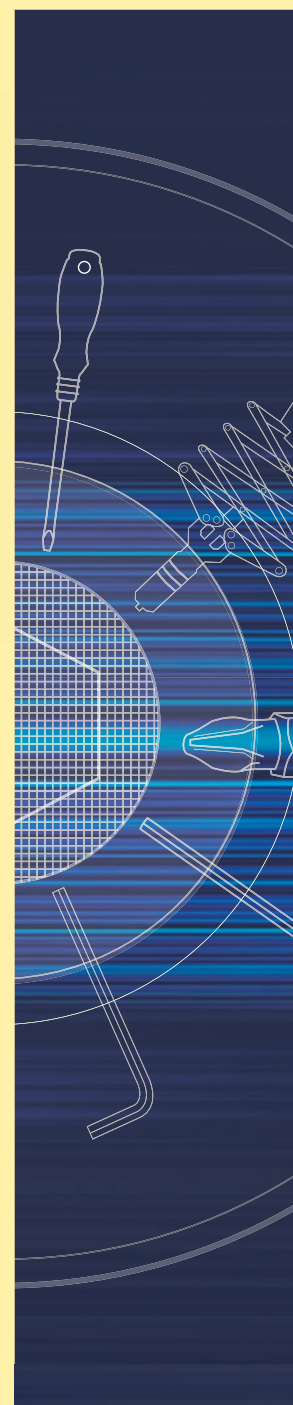
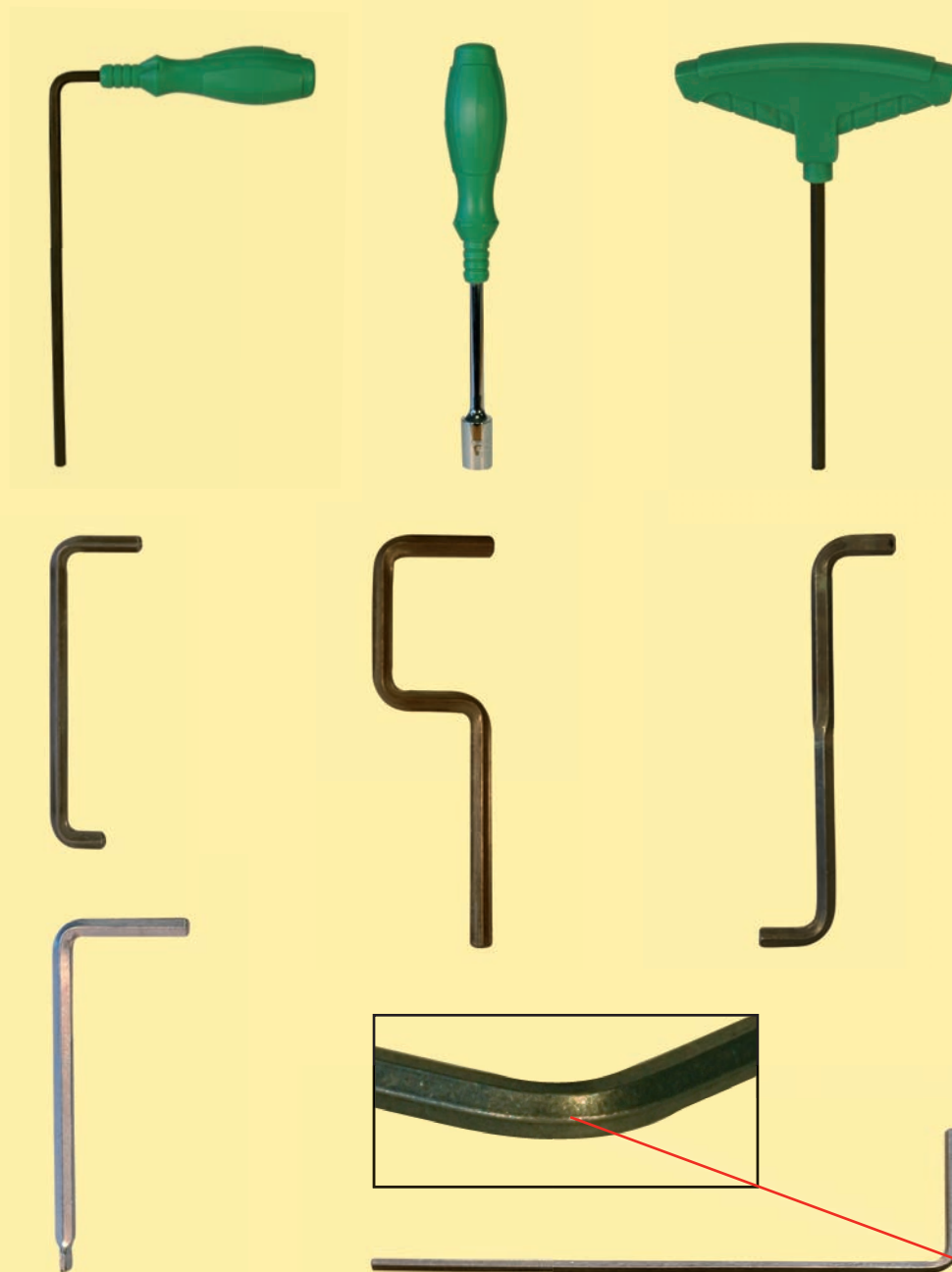


Diameter van blindniet + totale dikte van het te nieten materiaal.
 Diameter of rivet + total thickness of material to be rivetted together.
 Durchmesser blindniete + totale abmessung des zusammen zu nietendes material.
 Diamètre du rivet + épaisseur totale du matériel à monter.
 El diámetro del remache + el espesor total del material a juntar.

BLINDKLINKTANGEN
 RIVETING PLIERS
 BLINDNIETZANGEN
 PINCES À RIVETER
 REMACHADORAS



Customized tools from Beargrip



 **BEARGRIP**[®]
Tool Mfg. Co. Made in Holland

Beargrip Tool Mfg. Co.
P.O. Box 6
7963 ZG Ruinen
The Netherlands

T: +31 (0)522 47 17 44

F: +31 (0)522 47 25 17

E: mail@beargrip.nl

I: www.beargrip.com